



DESIGN CENTRE

GUIDE

AUTUMN | WINTER 18

The Ultimate Guide to the World's Premier Design Destination

design centre
LONDON



ARTE®

wallcoverings for the ultimate in refinement

www.arte-international.com

LONDON Showroom Second Floor, Design Centre East, Chelsea Harbour
info.uk@arte-international.com 0800 500 3335



UBIK NIGHT COLLECTION, DESIGN POLIFORM.

Poliform

Poliform UK
276-278 Kings Road, London SW3 5AW 020 7368 7600
Design Centre Chelsea Harbour, London SW10 0XE 020 7352 0064
51-61 Wigmore Street W1, London - opening soon
poliformuk.com

POLIFORM.IT

THE GUIDE

autumn | winter 2018

Positivity is at the heart of our new issue: of the tastemakers and influencers we admire, the luxury brands we love, the designs that inspire us. It was ever thus at Design Centre, Chelsea Harbour – as a global hub that champions creativity – but our confident approach is, perhaps, more important than ever in a changing world. In the following pages – showcasing the most beautiful of the new-season collections, the brightest and best of world-class talent – there is a particular vibrancy that resonates. Enjoyment is better shared; which is also why this edition of The Guide is brimming with ways to experience design together. With an undeniable momentum, Design Centre, Chelsea Harbour has its eye on the future. Design Centre East has grown to include over 40 showrooms and work is progressing well on the Design Avenue and Design Centre North. In the domes, the third floor is gaining additional space to welcome more showrooms. As we grow, we evolve, and yet remain forever the compass point for international design.



CONTENTS

06	CONTRIBUTORS Behind the issue and in the know	37	THE CHANGING FACE OF CLUBLAND Upping the stakes to stand out from the crowd	59	WHO'S WHO Essential list of showrooms and where to find them
09	STYLE FILE Round-up of design highlights to note	42	MIX & MAX Meet Kelly Wearstler; the queen of modern Hollywood glamour	68	SUPER BRANDS Compendium of more than 600 international brands
14	ALL THINGS BRIGHT AND BEAUTIFUL Just in: AW18 gets colourful – and it's having a positive effect	47	THE RETAIL REVOLUTION Why experiential is the new buzzword for shopping	72	WISH LIST From inspiration to innovation – find all that you need
27	DESIGNER LOVES Three design influencers share their favourite products	52	SEA CHANGE Adaptability is key to high-end projects, on land and at sea	74	WINDOWS TO THE WORLD A glimpse into showcases
31	FAMILY VALUES Design enterprises built on familial bonds	56	DESIGNS TO INSPIRE Must-have ideas to get the look	75	NEW & NOW One click away from the new season's line-up
				79	GETTING AROUND Navigate the domes and Design Centre East

ABOVE: From left to right: 'Sugar' armchair; Julian Chichester: textured vase; 'Artemisia 8' vase; Wunderkammer at Miles x Bookshop; 'Hughes' dining table; Arteriors; 'Phenomena' floor lamp; flamingo pink/gold and mint/green, Bomma at Poliform. Wallcoverings: 'Costermans Garden', Iksel - Decorative Arts and 'Aquarelle' (W1087/03), Altfield. Fabric: 'Chintal' (J469F-01), Jane Churchill at Colefax and Fowler. Paint: 'Musk Pink', Zoffany at Style Library
For more information call 020 7225 9166, email enquiries@dcch.co.uk or visit www.dcch.co.uk. Design Centre, Chelsea Harbour, London SW10 0XE



Contributors



LUCIA VAN DER POST

Lucia is the leading commentator on the luxury industry. As launch editor for *FT How to Spend It* she turned the magazine into cult Saturday reading. She has written for *The Sunday Telegraph*, *The Sunday Times*, *Country & Town House* and was also editor of the lifestyle pages for the *Financial Times*. Her many awards include the Luxury Briefing Award for Excellence and the Walpole Medal of Excellence. For this issue, she explores how private clubs are changing to cater to the needs of their sophisticated, well-travelled members (p37).



DOMINIC BRADBURY

Dominic has been writing about architecture, design and travel for many years. His articles can be found in magazines such as *House & Garden* and *The World of Interiors*, as well as *The Times* and *The Telegraph*. His books include 'The Iconic Interior' and 'Making House: Designers at Home'. He caught up with LA-based designer Kelly Wearstler for 'Mix & Max' (p42).



TICKY HEDLEY-DENT

Ticky is a novelist, features writer and social barometer who has been editor at large at *Boat International* and features director at *Tatler*. In 'Sea Change' (p52), she reports on how designers, whether on land, in the air or at sea, are not confining themselves to what they know.



EMILY BROOKS

Emily is an award-winning journalist and editor specialising in interiors, architecture and design. London-based, she writes for the *Daily Telegraph*, *Grand Designs* and the IIDA's *Perspective* magazine, among others. In 'The Retail Revolution' she reports on how shopping habits are rapidly changing (p47).



ARABELLA MCNIE

Arabella is a creative interiors stylist renowned for her pared back style with attitude. An ability to imaginatively interpret a brief has led her to art direct projects both at home and overseas, including the look of many key events at Design Centre, Chelsea Harbour. Her artistic flair, use of colour and eye for detail can be seen in 'All Things Bright and Beautiful' (p14).



GILES KIME

Giles Kime is interiors editor of *Country Life*. He started his career on *The World of Interiors* and his roles since include launch editor of *Telegraph Home*, editor of *Decanter* and executive editor of *Homes & Gardens*. As regular host of Design Centre, Chelsea Harbour's Conversations in Design series, he has interviewed some of the greatest minds in interiors. For this issue, he explores why family is so important in the business of design (p31).

PRINCIPE II



WIRED CUSTOM LIGHTING

WWW.WIRED-DESIGNS.COM

MIAMI

LOS ANGELES

LONDON

NEW YORK

DUBAI

ON THE COVER: From left to right: 'Nori' coffee table, Gallotti&Radice; 'Round Mixed Tan Glaze' jar, Paolo Moschino for Nicholas Haslam Ltd; 'Butterfly Ambarina' wall decoration, Paolo Moschino for Nicholas Haslam Ltd; 'Jackie' occasional chair, Gallotti&Radice; 'Cheval Ispahan' sculpture, Charles Paris Lighting at Rubelli/Donghia; 'City Lights' rug, Tufenkian Artisan Carpets; Wallcovering: 'Bearded Leopard' by Moooi, Arte; Fabrics: 'Cullinan' (31634/04), James Hare at Marvic Textiles and 'Aliyah', Clarence House at Turnell & Gigon. Paints: 'Warsie Light' and 'Burn Black', Sanderson and 'Serpentine', Zoffany, all at Style Library



LONDON SHOWROOM
NORTH DOME, SECOND FLOOR
+44 (0) 207 351 3333
PHILLIPJEFFRIES.COM/PALAZZO

Style File

STAY ONE STEP AHEAD WITH THE SEASON'S MOST SOUGHT-AFTER DESIGNS

▼ Buildings and architecture are a recurring theme this season. The outlines of this striking ‘Block Party’ cityscape by Donghia have been machine embroidered, while specially dyed accent yarn has been sewn in by hand to create energetic dots throughout. See the fabric at RUBELLI/DONGHIA.



▼ Indian palampore panels were a sensation in 17th century Europe. Now Anna French has launched a co-ordinated collection of exotic Indienne-inspired designs of the same name. See the charming tree of life, batik and paisley motifs on fabrics and wallcoverings at JACARANDA CARPETS.



➤ This whimsical ‘Marbella’ lamp from ARTERIORS has an inherent individuality. Unique differences such as the hand painted stripes and the textures on the glaze reveal how it has been made, setting it apart from a mass-produced design.



➤ There is a move towards brilliantly positive interiors. CREATION BAUMANN’s ‘Voile Tinto’ and ‘Umbria Tinto’ with their digital all-over print have colour gradients that sees greens fade into orange. Use them to set the scene.



▲ Villa Nova has launched Picture Book, its first children’s focused collection, thanks to the contribution of three leading illustrators. The ‘Island Hopping’ fabric by Christopher Corr captures his gouache work which is inspired by colour, world travels and a love of life. See it at ROMO.



▼ BEAUFORT COLLECTION, known for its expertly crafted furnishings and curtain making, has a new showroom on the Third Floor. With its commitment to craftsmanship, comfort and quality, the Leolux boutique will be a key feature. Don’t miss the contemporary range by Edward van Vliet inspired by 19th-century luxury hotel interiors.





➤ Sutherland Furniture, available at SUTHERLAND PERENNIALS STUDIO, has teamed up with renowned Belgium architect Vincent Van Duysen to create the Franck outdoor furniture collection. His design language is all about purity, refinement and the perception of space. Visit the new showroom to see how functionality, durability and comfort are combined with precise execution and tactile materials.

◀ Bespoke design is a forte at Design Centre, Chelsea Harbour. The mood is exuberant, with looks that have punch and personality. The *Colourist* collection at JULIAN CHICHESTER offers a wide spectrum of paint finishes that can be colour matched. At OFICINA INGLESIA FURNITURE, new matt finishes can be selected for its handmade pieces.



➤ Translating the idea of femininity and contemporaneity, the soft, enveloping lines of GALLOTTI&RADICE's 'Sophie' armchair create a continuous profile within the brass satin frame. A place to cocoon yourself for a while.

✔ Colours have a positive psychological effect when in harmony with one another. 'Lustmore' from JEAN MONRO is a charming painterly representation of foxgloves, printed on linen.



▲ Design Centre, Chelsea Harbour is leading the way with its confident approach to colour and creative excellence. Discover the season's new joyous palettes and take note of the latest sophisticated colour combinations – from coral, blush and emerald to sherbet lemon, burnt orange and cerulean blue. This spectacular 'Taraz' ikat wallcovering by Le Manach can be found at PIERRE FREY.

◀ Collaborations are big news this season. Award-winning designer Alexandra Champalimaud has teamed up with HOLLAND & SHERRY for the *Framework* fabric collection. Staffan Tollgård's *Archipelago* range for PORADA (shown) reveals how Italian craftsmanship and a cool Scandinavian design aesthetic came together.



ROMO

GARDENIA
Prints & Embroideries

romo-gardenia.com



SACCO
NEW YORK | LONDON

Sacco London
Design Centre East
Third Floor, Chelsea Harbour
London, SW10 0XF
020 8191 8888

Interior Design by Fox-Nahem
Photographed by Peter Murdoch

Style File



➤ The 'Prism' cabinet is an expression of Alexander Lamont's dedication to meticulous detail, exquisite materials and a look refined by a life lived between Asia and Europe. Mother-of-pearl, patinated copper, lustrous indigo and taupe straw marquetry is inlaid by hand over the front and sides. Discover more at [MILES X BOOKSHOP](#).

✔ *Narrative is an important ingredient in design. Renowned mural artist Melissa White was commissioned by Zoffany to bring to life its 'Stand Wood' wallcovering. Capturing the feel of an aged artwork, signature brushstrokes add interest as a mythical story unfolds. Find it at [STYLE LIBRARY](#).*



➤ Blurring the boundaries between art and interiors, *Living Wall* sees the work of fine artist Michael Angove on a range of ceramic tiles for ARTISANS OF DEVIZES. Complex, colourful patterns of British hedgerows show a richly layered ecosystem that bursts with life.



✔ *The appetite for statement rugs is now finding expression in designs that are as ravishing as they are soft to the touch. TUFENKIAN ARTISAN CARPETS has curated the Made for the Trade collection. This abstract 'Aberdeen' hand knotted rug in wool and silk encapsulates its sophisticated aesthetic.*



Bernie de Le Cuona is inspired by her travels. From the magnificent Winter Palace in St Petersburg to the gardens of Versailles, a sumptuous new collection aptly called *Wanderlust* is made in the most luxurious fabrics such as alpaca, cashmere, silk, wool and linen. Take a trip to [DE LE CUONA](#).



▲ New arrival SACCO CARPET is well-established in the US as the go-to for superior carpets. An extensive portfolio graces yachts, private jets as well as high-end residences and hospitality projects such as Nobu restaurant (shown here). Now, a new Design Centre East showroom is weaving its magic in London.

✔ *New to GMR INTERIORS is French lighting design company, Ozone. Made in Paris, the minimalist designs combine traditional craftsmanship with LED technology, and are notable for their chic simplicity and grand presentation.*





All Things Bright and Beautiful

THIS SEASON'S NEW LOOKS DEMAND CLOSER INSPECTION. TRAIN YOUR EYE ON JOYFUL PATTERN, SURPRISING AND SOPHISTICATED COLOUR COMBINATIONS, AND SCULPTURAL SILHOUETTES

EDITED BY **ARABELLA MCNIE**
PHOTOGRAPHS BY **CHRIS EVERARD**

FROM LEFT TO RIGHT: 'Frank' lounge chair, by Vincent Van Duysen, Sutherland Perennials Studio. 'Le Coupe' occasional chair, J. Robert Scott. 'Koi Carp', Alexander Lamont at Miles x Bookshop. Books, Potterton Books. 'African Pot' table lamp, neutral, with ikat cotton shade, Vaughan. 'Audrey' sofa, Gallotti & Radice. 'Plato' drinks cabinet, Lacaze London. Wallcoverings: 'Monticito Stripe' (AT78722), Anna French at Jacaranda Carpets. 'Small Medallion' (680-01), Blithfield at Lewis & Wood. 'Tansman' (AT78732), Anna French at Jacaranda Carpets. 'Fish' (23103), M.C. Escher at Brian Yates. Fabrics: 'Taro Stripe' (J972F-03), Jane Churchill at Colefax and Fowler. 'Kumazi' (P0145), Pedroso & Osório at Colony. 'Kassena' (21237/585), Hodsoll McKenzie at Zimmer + Rohde. 'Muir Woods' (120862/0040), Scalamandré at Stark Fabric. 'Navy and red' cushion, Vaughan. Paint: 'Anapuri Red' and 'Indego Blue', Sanderson at Style Library



FROM LEFT TO RIGHT: 'Figaro' side table, Julian Chichester. 'Cheyne' lantern, Vaughan. 'Octagon' basin, Villeroy & Boch. 'Barcelona' bath (RAL4007), Victoria + Albert Baths. 'Lek' sofa, Christophe Delcourt at GMR Interiors. 'Thea' occasional chair, Gallotti&Ranzice. Wallcoverings: 'Prato' (STN72), Nobilis. 'Iride' (22790), Brian Yates. 'Lilies' (8463), midnight pond, Phillip Jeffries. 'Wood' (229379), Brian Yates. Fabrics: 'Aime' (M188 925), Misia at Colony. 'Flamestitch' (3556/1140), Gainsborough at McKinney Gainsborough. 'Biophilia', Kit Miles at Miles & Bookshop. 'Tivoli' (03), peacock, Weyman. 'Countess' (322661), twilight, Zoffany at Style Library. Paints: 'Newby Green', 'Meadow Violet' and 'Oxney Olive', Sanderson at Style Library

FROM LEFT TO RIGHT: 'BB' chair, Rubelli Casa at Rubelli/Donghia. 'Embrasse' tie-back (PIN021), marzapane liquirizia, Dedar. '1940's Kuper Horse' lamp, Birgit Israel. 'Loubes' bench, Paolo Moschino at Nicholas Haslam Ltd. 'Black Linear' rug, Birgit Israel. 'Lollipop' chair, Francesco della Femina at Miles x Bookshop. 'Ellis' laser cut trim, onyx, Samuel & Sons. 'Venere' vanity desk, Gallotti&Radice. 'Shine Back 2 Back' table lamp, Charles Paris Lighting at Rubelli/Donghia. 'Mother and Child Series' painting by Henry Moore, Birgit Israel. Wallcoverings: 'Acorus' (FP520/001), Pierre Frey. 'Topiary' (115/2006), Cole & Son. 'Sphere' (23170), M.C. Escher at Brian Yates. Fabrics: 'Virevolte Tempete' (71330/003), Création Metaphores at Abbott & Boyd. 'Manhattan' (10773 989), Zimmer + Rohde. 'Ithica', black, Wemyss. Paints: 'Burn Black', Sanderson and 'Architects White', Zoffany at Style Library



FROM LEFT TO RIGHT: 'Calle Stella' side table, Rubelli Casa at Rubelli/Donghia. 'Triennale 2' sofa (12105), Rubelli Casa at Rubelli/Donghia. 'Carmen' ottoman, Flexform. 'Saybrook' pendant, Oomph at Nina Campbell. 'Duck Feet' table lamp and 'Feather' lampshade, Porta Romana. 'Drop' occasional chair, Flexform. Wallcoverings: 'Kotori' (219190), Christian Fischbacher at David Seyfried Ltd. 'Menagerie of Extinct Animals' by Moooi, Arte. 'Little Sphere' (23176), M.C. Escher at Brian Yates. 'Floresta' (7426/04), Casamance at Colony. Fabrics: 'Green Lizard' (02), Dedar. 'Curzon', Zoffany at Style Library. 'Black Feather Georgette' (31559), James Hare at Marvic Textiles. 'Dauphine' (FO344-04), Watts of Westminster. 'Botany Bay', Scalmandré at Stark Fabric. Paints: 'Koi Carp', Zoffany and 'Newby Green', Sanderson, both at Style Library.



From left to right: 'Porto' armchair, Paolo Moschino at Nicholas Haslam Ltd. 'Lou' pouf, Gallotti&Radice. 'Truman' side cabinet, Davidson. 'Irene' table mirror, Arteriors. 'Otto' table lamp, Alexander Lamont at Miles x Bookshop. 'Crystal' curtain tie-back, orange, Nada Designs. 'Ana' sofa, Christophe Delcourt at GMR Interiors. 'Waterlily' rug (06), Stark Carpet. Wallcoverings: Butterflies covered in 'Paris Grey' (312869), Zoffany at Style Library. 'Skyscrapers' (1935), Phillip Jeffries. 'Clouds' (23134), M.C. Escher at Brian Yates. Fabrics from left: 'Terazzo' (31633/02), James Hare at Marvic Textiles. 'Japonica Embroidery' (7850/03), Romo. 'Aime' (M188824), Misia at Colony. Paints from left: 'Field Mushroom' and 'Carmen', both Sanderson at Style Library



From left to right: 'Hanford' ceramic table lamp (CTL0070) with 'Ikat' shade, yellow/blue, Vaughan. 'Vendôme' buffet, Hugues Chevalier at Marc De Berry. 'Quadrat' lamp and 'Bongo' lampshade, Porta Romana. Ceramic vase, Wunderkammer at Miles x Bookshop. 'Roma' nesting table (BA9253), Baker. 'Multi8' candelabra corda, De Vecchi at Miles x Bookshop. 'Oiseau Lune' sculptures, bronze/gold, Charles Paris Lighting at Rubelli/Donghia. 'Crosby' chaise, Ensemble upholstered in 'Rupert' at Fox Linton. 'Ecosse' rug, Topfloor by Esti. Wallcoverings: 'Iride' (23153), M.C Escher at Brian Yates. 'Tweed', Aux Abris at George Spencer Designs. 'Bamboo' (WP2673/005), Colony. 'Cube' (23153), M.C Escher at Brian Yates. Fabrics: 'Kamek', Wemyss. 'Norfolk', Armani Casa Exclusive Textiles by Rubelli at Rubelli/Donghia. 'Nagano', Armani Casa Exclusive Textiles by Rubelli at Rubelli/Donghia. 'Curzon' (333008), Zoffany at Style Library. 'Matira Woven' (8018111), Brunschwig & Fils. Paints: 'Woodland Yellow', Sanderson 'Lazuli' and 'Ink', Zoffany both at Style Library



Designed for Sleep Comfort



LONDON SHOWROOM

304, Design Centre East
Direct: 0203-9141262

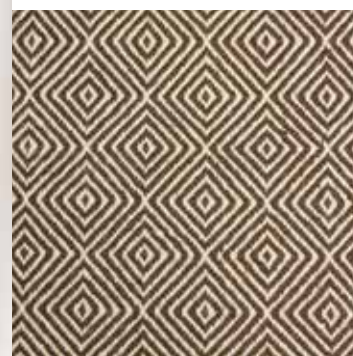
jensen-beds.com/uk

Designer Loves

AN ESSENTIAL SOURCE OF INSPIRATION TO SOME OF THE WORLD'S MOST CREATIVE PEOPLE, DESIGN CENTRE, CHELSEA HARBOUR IS ALWAYS BRIMMING WITH IDEAS. HERE, THREE DESIGNERS CURATE THEIR DREAM SOURCING WISH-LIST

PETER MIKIC

Originally from Australia, London-based Peter has a reputation for colourful, tailored and sophisticated spaces, drawing on his background in fashion before he moved into interiors in 2006. His highly individual schemes pair timeless pieces and modern accents with a mix of textures, finishes and finds. Known for his versatility, his international projects range from private residences to superyachts and private jets. He is currently working on an apartment in Chelsea and a rambling country house.



CLOCKWISE FROM FAR LEFT: 'Pangborne' carpet, col 1/5, Tim Page Carpets. 'Shinto' fabric (4386), pale mushroom, J. Robert Scott. 'Etienne' fabric, aquamarine, Lewis & Wood. 'Savuti' wallcovering (109/1006), Cole & Son. 'Ananas' fabric (F3104001), moutarde, Pierre Frey. 'Bazaar' fabric (797/231), Sutherland Perennials Studio. 'Dante' side table, dark bronze, Julian Chichester. 'Double Decker' umbrella, cabana blue stripe, Santa Barbara Designs at Summit Furniture. 'Dolce' pom-pom fringe (985-45494-05), pina colada, Samuel & Sons

"It's my first stop. Whenever I need inspiration for colour and pattern, I'll always head over to Design Centre, Chelsea Harbour. They're all so helpful and charming which helps when tackling the vast collections"



TARA BERNERD

British designer Tara is the founder of the interior architectural practice, Tara Bernerd & Partners. Based in London's Belgravia, her team works on a global platform and prides itself on its intelligent approach to interior space-planning and design. Her

handsome signature style is one of approachable luxury with an industrial edge and each space possesses a masculine, and ultimately timeless, elegance. Recent hotel projects include The Principal London and Sixty Soho in New York.



"Design Centre, Chelsea Harbour is my ultimate go-to for design in London. It's a great space and helps my team and I keep our finger on the pulse, so I try to drop by as often as possible"



CLOCKWISE FROM FAR LEFT: 'Ion' writing desk, Giorgetti; 'Honiton' carpet, col 19, Tim Page Carpets; 'Fante' coffee tables, black with antique I mirrored top, Gallotti&Radice; 'Vinyl Luxe Leather', featherbuck, Phillip Jeffries; 'Bacco' floor lamp, Julian Chichester; 'Jacqueline' bed, Poliform; 'Nissa' dining chair, Porada; 'Savernake' tile, Artisans of Devizes

"Design Centre, Chelsea Harbour is an essential source of inspiration for all types of projects. As well as one's go-to products, you can always be sure to find something new amongst the expanding cross section of brands on offer"



FLORA SOAMES

With a background in art, Flora spent ten years as creative director of Talisman before setting up her design consultancy in 2009. Her interiors are shaped by a modern, yet eclectic approach: her work has the identifiable stamp of colour, pattern and comfort, with fabrics an essential ingredient for creating a sense of personality. Recent projects include the renovation of a Holland Park townhouse for a family, and the redesign of Wiltons restaurant in Mayfair.



CLOCKWISE FROM FAR LEFT: 'Oleander' fabric, green, Jean Monro; 'Alizarine' fabric, original, Le Manach at Pierre Frey; 'Beaded Ball' finial (F96), antique bronze, McKinney & Co at McKinney Gainsborough; 'Bobbin' chair, white, Julian Chichester; 'Upton' wall light, Vaughan; 'Amauri Velvet' fabric, sand/berry, Brunswick & Fils; 'Paso' fabric, red/grey, John Boyd Textiles at Alton-Brooke; 'Jonty' braid (934/05), petrol, George Spencer Designs





HOXTON BY PERRIN & ROWE

HOXTON. A NEW FORM OF LUXURY.

Introducing Hoxton by Perrin & Rowe. British contemporary design
made with traditional skills and state of the art technology.
Quality defined.

PERRIN & ROWE[®]
MAYFAIR LONDON

PERRIN & ROWE SHOWROOM
DESIGN CENTRE, CHELSEA HARBOUR
LONDON SW10 OXE
CONTACT SARAH LEDDIN
+44 (0)20 7351 3085
CONTRACTS@PERRINANDROWE.CO.UK
perrinandrowe.co.uk

Family Values

GILES KIME DISCOVERS WHY SOME
OF THE MOST HIGH PROFILE
NAMES IN THE DESIGN WORLD
OWE THEIR SUCCESS AND
CREATIVITY TO FAMILIAL BONDS



'Linara' fabrics from Romo – this plain linen union is a best-seller, available
in 360 shades. Founded by Robert Mould in 1902, Romo is
today run by his great-grandson, Jonathan Mould, with a fifth generation –
his niece and three children – also involved in the business

When brothers George, Percival and James Baker set up their textile business in 1884 they became immortalised as the G, P and J in GP & J Baker, one of the most iconic names in British interior design. Before long, it became a thriving concern that boasted an archive of printing blocks dating back to the 18th century and successful collaborations with the leading Arts & Crafts designers of the day. Its huge success offered the perfect example of how familial bonds can provide the foundation of some of the world's most resilient enterprises.

On the other side of the Atlantic, another flourishing business was also founded by siblings. Morris, Sam, Sol and Hy Kravet were the first of five generations to successfully steer their company through the 20th and 21st centuries. Their father, Samuel, was a tailor who, during visits to his clients' homes, recognised a demand for interior design and opened a small trimmings store in the lower east side of Manhattan that his sons built into a firm selling the most sought-after decorative fabrics in the USA. Since then, it has grown hugely, boasting ever-evolving collections, acquisitions Lee Jofa and Brunschwig & Fils, alongside furniture, lighting and carpets. This year, it celebrates its first hundred years. Reflecting where it all began, its latest collection *Modern Tailor* takes a page from its original story with finely stitched embroideries, pleated fabrics, patchworked wools and cosy cable chenille.

Fathers, mothers, daughters, sons, sisters, brothers are the common denominator of many successful design-led firms at Design Centre, Chelsea Harbour; Dedar, Arte, Original BTC, Phillip Jeffries, Altfield, McKinnon and Harris, Gallotti&Radice, Lizzo, Samuel & Sons, C & C Milano and Porada are all shining examples of international success. It's no coincidence; creative spirits are attracted to design by more than just an opportunity to earn an honest crust – they are driven by a real desire to make beautiful, distinctive products, a characteristic that often runs in families.

Heritage brands like Watts of Westminster, Houllès, Stark Carpet, Nobilis, Lelièvre Paris and Pierre Frey continue the design legacy of their founders. In Italy, Nicolò Favaretto Rubelli's ancestors inherited the historic Venetian textile company from its founder Lorenzo Rubelli. Today, it is in the hands of the sixth generation and in many respects is unique – it can produce handmade fabrics using traditional techniques as well as highly sophisticated textiles using cutting-edge technology. "I consider it a privilege to belong to a family business," says Rubelli. "For me, this means working with special passion and enthusiasm."

Romo, another familiar name, was founded in Nottingham by Robert Mould in 1902. The business is run today by his great-grandson Jonathan Mould, the latter's niece Lindsay and his children Felicity, Emily and Jordan. "Between us we have many years of experience and a wealth of knowledge that has been passed down through

RIGHT: Nina Campbell's 50 years in business is a testament to the power of familial relationships in interior design: her son and daughter both work with her. This typically assured living room scheme features hand-tufted rugs by Tai Ping and a sofa upholstered in 'Silk Puffs' fabric by J. Robert Scott with cushions in Donghia fabric





“When there is a family behind a brand, it builds trust in a unique way”

the generations. Working alongside my family members is such an advantage as we know each other’s strengths and trust one another implicitly.” Robert Mould would be proud; the business he started now employs over 350 people, owns half a dozen highly successful and diverse brands including Mark Alexander, Black Edition and Zinc Textile which are available in 70 countries, and recently won the Queen’s Award For Enterprise.

But the same dynamic is also behind the success of countless newer, smaller family businesses. Husband and wife teams at Design Centre, Chelsea Harbour abound including Sutherland Perennials Studio, Iksel – Decorative Arts, Marc de Berny, Simpsons, Vaughan, Evitavonni, Jacaranda Carpets and Topfloor by Esti, to name but a few. “Our work is our life and the family have always been a part of it,” says Andrew Hills of the 30-year journey that he and his wife Sarah have made in creating Porta Romana. “In the early days our son, Harry, slept through design shows in his cot when he was a week old. And it’s not just about Porta Romana – there’s lots of cross pollination; we all get involved with each other’s creative endeavours. Our daughter, Maddie Rose Hills is an artist and our son Laurence is a film maker.”

“The family bond is always there,” says Mark Moussa, who founded Arteriors in North Carolina in 1987 and now works with his son Tanner and daughter Mackenzie in their burgeoning lighting, furniture and accessories business. He also sees those bonds as a distinct commercial advantage; “Our industry is based on relationships and trust. Customers want to trust the people they work with, when there is a family behind a brand, it builds that trust in a unique way.” For visitors to Design Centre, Chelsea Harbour this not only instils confidence but it also allows them to tap into a deep well of accumulated know-how.

Claudia Davidson, of the bespoke furniture brand who works with her father and sister echoes this. “There is nothing like trust in a business and to be able to have sincere confidence in the people you work with is highly reassuring and motivating.”

Family ties are a common feature of interior design practices. The interior designer Lavinia Dargie believes that there is a creative benefit to two generations working together. “Working with my daughter, Marina, is the ideal mix of experience and innovation, bringing together the old and the new world.” Other examples abound. “In family businesses, decisions are often made for reasons that are very different to those run by shareholders and that helps to explain why so many of them are so successful,” says Nina Campbell whose son, Max, and daughter, Alice, both work with her. The fact that she recently celebrated 50 years at the top of her game says a great deal about the benefits of keeping it in the family.

TOP: A Donghia ‘Pavel’ sofa upholstered in Rubelli’s ‘Marcello’ fabric, and cushions in ‘Nirvana’, ‘Silent Movie’ and ‘Coco’. Rubelli is a sixth-generation family business. BOTTOM: Kravet’s *Modern Tailor* range pays homage to company founder Samuel Kravet’s beginnings as a New York tailor



New showroom opening 44 Pimlico Road, London SW1W 8LP
Design Centre, Chelsea Harbour, SW10 0XE
www.delecuona.com

SUTHERLAND

STUDIO

PERENNIALS

CONTEMPORARY ■ CASUAL ■ OUTDOOR

Design Centre, Chelsea Harbour
Second Floor, North Dome
and coming soon to our second location:
Third Floor, Centre Dome



Franck Lounge Chairs with cushion fabric by Perennials
sutherlandfurniture.com | perennialsfabrics.com



Photo: © James McDonald

The Changing Face of Clubland

LUCIA VAN DER POST REPORTS ON HOW THE CAPITAL'S MEMBERS' CLUBS ARE DIFFERENTIATING THEMSELVES ON STATEMENT DESIGN, AS WELL AS ADAPTING TO THE NEED FOR WORK AS MUCH AS PLAY

It was the designer Martin Brudnizki who summed up the new mood sweeping through the interiors of the more enterprising hotels and private members' clubs when he said, "it's all about maximalism now." What matters now is creating an environment that surprises, uplifts and stands out from the crowd. Whereas once interior designers liked to show that they understood the rules of design, today they want to be different. And, above all, what matters most is that the interiors should connect intimately and specifically with the history and architecture of the building, as well as with the purpose and lifestyle of the members and visitors.

Take the new Annabel's, which Martin Brudnizki Design Studio was responsible for transforming. Inspired by a painting of the Garden of Eden and the fall of man, it is chiefly notable

for its exuberance. Annabel's is a riot of playful colour – pink roses run amok in the ladies loos, vast glass chandeliers from the Romanov era adorn the entrance hall, bronze and glass palms waft across the ceiling in the basement nightclub, flora and fauna peep out from many a corner of the first floor bar. Key to the design was knowing that Annabel's members are amongst the most sophisticated, internationally well-travelled in the world and that it was going to take a lot to surprise them. The general view is that Brudnizki certainly has. Samuel & Sons provided hand-made fringes for the cushions and lampshades, while Watts of Westminster came up with the hot orange tassels found on the life-size plaster of Pegasus by George Jackson in the staircase hall. Pierre Frey's way with flowers can be seen in the silk embroidered fabrics of which the 'Fleur de Rosee'

ABOVE: The Garden at Annabel's designed by Martin Brudnizki Design Studio. The maximalist scheme includes textiles and passementerie from Turnell & Gigon, including 'Lézard à Méches' tassel fringe by Les Passementerie de l'Île de France, and 'Zebrano', 'Lancelot' and 'Poin de Hongrie' fabrics



design is among the most beguiling. Attention to detail is everywhere with even the doormen's uniforms being made from specially chosen Zoffany fabric from Style Library, found, like many of the specialist wallcoverings and fabrics, at Design Centre, Chelsea Harbour.

But while Annabel's is perhaps the most exuberant and extravagant of all the current crop of members' clubs, most other interior designers are equally passionate about tailoring their interiors to the customers they have cater to. Take 5 Hertford Street, Robin Birley's first foray of his own, away from the empire his father Mark Birley had founded. Here, Birley has recreated an English country house, filled with comfy sofas and chairs, lights in just the right places, fires burning in the grate in winter, along with pretty chintzes, stripes and checks. Members can choose to dine in a whole host of different settings – some have a favourite spot they always go for, others like to move around according to their mood.

What Freddy van Zevenbergen of Lambart & Browne, which oversaw much of the design, wanted to do was to create “a home away from home feeling. It's why there's art on the walls, books on the walls, photographs of Robin's dogs – it all anchors the design in something very personal. People want to be transported away from their everyday lives into something more glamorous, more hedonistic.” They got Rifat Ozbek, for instance, a fashion designer, to design some of the textiles and bring a “different twist to the mix”. Many of the fabrics, in particular, were sourced from Design Centre, Chelsea Harbour – “we used a lot of velvet and beautiful brocades from specialist mills used by

“What matters now is creating an environment that surprises, uplifts and stands out from the crowd”

Colony as well as from Turnell & Gigon.” At Oswald's, Birley's new club devoted to “the glorification of wine” but most definitely aimed at both men and women who love wine and want to explore it, Venetian glassmakers were commissioned for an interior inspired by Versailles' Hall of Mirrors, using thousands of pieces of antiqued glass to cover the walls and cornices, while another hall has a custom-painted design taken from a tapestry in Leeds Castle.

Kettner's Townhouse, which is now part of the Soho House group, recently reopened after a grand transformation. The design team has been careful to keep much of the fin-de-siècle atmosphere that was so beloved by its many fans, but it has refreshed and revived it, adding some 30 rooms upstairs as well as a redesigned champagne bar and restaurant. There are Morris & Co. wallpapers in the bedrooms, bespoke fabrics on the banquettes (mostly from Watts of Westminster), as well as size-specific installations from Danny Augustine and Sara J Beazley. What all this illustrates is that, today, interiors must be unique and inspiring – which is why creators of these special clubs go to such extraordinary lengths to make sure every detail, from the taps and tassels to the mirrors and chandeliers is unique and particular.

OPPOSITE: The Club at Annabel's, featuring Manuel Canovas' 'Lea' fabric, from Colefax and Fowler; on the bar stools, amid a riot of pattern, colour and texture. ABOVE: The original Soho House on Dean Street, recently given a more informal makeover by its in-house design team. BELOW: The Flower Room, one of Annabel's private dining spaces. Pierre Frey's 'Fleur de Rosee' fabric, which features an embroidered cherry-blossom motif, envelops the walls

Photos: @ James McDonald, @ Soho House



Many private members' clubs used to be places where members merely relaxed and played – today many of them double as work places. Think of Soho House's original Dean Street club, which is usually filled with would-be playwrights writing scripts, television supremos planning their next series and journalists sending in their story ideas. To meet their needs, for the recent renovation, out went the formal club chairs and traditional interiors of the masculine club world, in came bare floorboards, comfy sofas, large farmhouse tables, and a general air of relaxed informality. To that formula now has been added layers of glamour – and most importantly – big dollops of colour.

At The Curtain, one of the new breed of members' clubs that offers members a chance to network, to play, to eat, to get fit (work out in the gym, swim in the rooftop pool), to learn, they have used design to delineate the different areas so that there are quiet work spaces as well as communal areas where there's a social buzz. These truly are homes away from home – except better, in that they offer more facilities than all but the grandest of homes.

When Suzy Hoodless was asked to help transform the former BBC Television Centre she bore in mind the new roles that these communal areas had to play in the lives of the people using it. Firstly, there were the show apartments, then there was the pavilion which was to be a stand-alone building with a reception area as well as a space for screening and meeting rooms. Her first thoughts were to “honour the original BBC architecture as well as the more contemporary building, to fuse, so to speak, the amazing architectural heritage with contemporary living.” These days, when so many people work from home, which can

“The creators of these special clubs go to extraordinary lengths to make sure every detail is unique and particular”

be lonely, she felt it was important that the “communal areas created a sense of community. People's work and home lives are so much more intertwined and so we designed a series of large communal work tables where people can sit, plug in their laptops and work for as long as they liked.” And then there was the comfort factor, which was a critical way of making the workspace friendly and accessible.

Meanwhile, branded residences such as The Peninsula London's apartments and Swire Hotels' properties (in particular, The Middle House in Shanghai), know that design has a crucial part to play in establishing their brand. Both go to immense lengths to give their interiors the sort

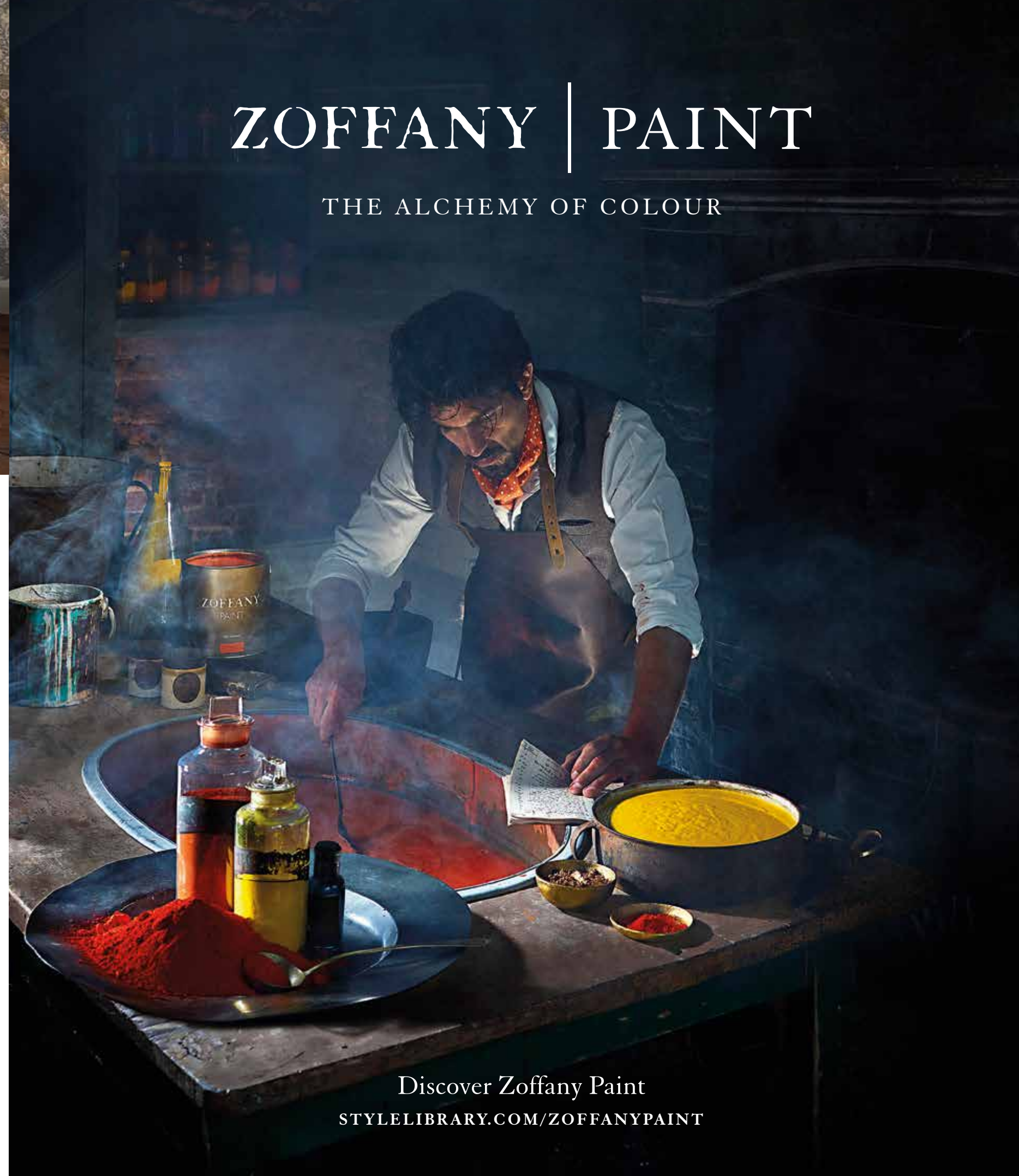
of distinctive touches that make for memorable experiences. Piero Lissoni, who oversaw The Middle House Shanghai, has skilfully created elegant interiors that marry a modern sophistication with the indigenous culture, so that those

who stay there have a strong sense of place and yet enjoy all the technical expertise the modern traveller expects.

Clubs are merely following in the footsteps of the best boutique hotels in realising that what they have to offer their members is something that is rooted in the interests of their members, in the history of the place and in the lifestyles of the people who use it. As their clientele becomes more and more sophisticated they are looking for interiors that are more inspiring, more specifically tailored to their needs. On the lips of every designer is the word “bespoke” – cookie-cutter interiors no longer cut it. As lifestyles change, as more and more people turn to clubs and communal workspaces, so interior design is evolving to meet these new and changing needs. All the evidence so far is that interior designers have upped their game and are more than up to the challenge.

Photo: © Soho House

ABOVE: Kettner's Townhouse, a recent addition to the Soho House Group, features bedrooms decorated with Morris & Co's 'Seaweed' wallpaper, from Style Library – a design first created in 1901



ZOFFANY | PAINT

THE ALCHEMY OF COLOUR

Discover Zoffany Paint

STYLELIBRARY.COM/ZOFFANYPAIN



Mix & Max

KELLY WEARSTLER IS THE INFLUENTIAL AMBASSADOR OF MODERN HOLLYWOOD GLAMOUR WHO EMBRACES 'MIXOLOGY'. DOMINIC BRADBURY SPOKE TO HER ABOUT HER LATEST PROJECTS

The designer Kelly Wearstler does not stand still. She is constantly reinventing herself, seeking out new opportunities and opening her eyes to a global treasure trove of inspiration founded upon a love of everything modern. There is an energy, a dynamism, that forms a common and colourful thread through all of her projects ranging from private residences to hotels and her growing product lines of fabrics, wallcoverings and tiles. Famously, Wearstler describes her eclectic, multi-layered style as 'mixology'.

"I'm a modernist at heart, for sure," says Wearstler. "But even if I am influenced by something from the Twenties, Thirties or Forties I will run it through my own filter so that it gets reimagined and turned into something modern and contemporary. I love textiles with tonnes of texture, real metals with patina and I love colour and graphic patterns – things that have an impact. But at the same time I don't want to pigeon hole myself, so I'm also working on some new projects that are relatively minimal and more about texture. It's about what feels right at the time and for the product. The work is always evolving as I push myself as a designer."

The latest showcase for Wearstler's unique take on design is the first in a new collection of Proper Hotels. Hosted by San Francisco's very own flat iron building – a striking Twenties gem arranged over seven storeys – Proper Hotel San Francisco offers 131 rooms, a choice of restaurants and a sequence of reception spaces and salons that fuse high ceilings and original, period touches with striking wallscapes of assembled paintings and artworks together with richly upholstered furniture, vibrant rugs and an eclectic mix of furniture, both old and new. The bedrooms themselves are hymns to pattern and texture, with bold wallpapers and bespoke beds.

"San Francisco is very rooted in tradition and heritage, even though it's also about technology and being progressive," says Wearstler. "The city is sensitive to its historic buildings so we worked closely with their heritage board on restoring the exterior and respecting the original architectural interior detailing on the inside, but we also wanted something modern against this backdrop. So when I was designing the hotel I wanted it to have a fresh take on tradition – it was about reimagining the past so that it felt fresh and youthful, but still suited to the building."

The San Francisco hotel also features a choice of restaurants and bars, including the Villon restaurant (inspired by French cubist painter Jacques Villon, the brother of Marcel Duchamp)



The Salon at Proper Hotel: the new hotel group is co-founded by Wearstler's husband Brad Korzen, and the interiors of its first outpost in San Francisco blend tradition and heritage. The sofa on the left is upholstered in Wearstler's 'Montage' fabric for Lee Jofa



and the rooftop lounge and bar, Charmaine's. There's a rich European influence, particularly from the Twenties and Thirties, yet the very first Proper Hotel also feels suitably infused with West Coast glamour. It's a sophisticated, considered blend. Yet the idea for Proper Hotels – co-founded by Wearstler's husband Brad Korzen – is not just to roll out one aesthetic. Each hotel will be an individual response to its own setting and surroundings.

"It was about coming up with a new brand and a new approach, so there's a tonne of thought, love and attention to detail," says Wearstler. "But each Proper Hotel will be different and unique. Some are new constructions, some are renovations, with the next three hotels [in Downtown Los Angeles, Santa Monica and Austin] opening towards the middle of next year. I love everything about it and working out what the whole experience is from pulling up outside the hotel to checking out, but every detail has to be thought through."

Wearstler grew up in South Carolina in a house by the ocean. Her mother Nancy worked as an antiques dealer and, as a child, Wearstler would accompany her to auctions and flea markets; the interiors of her mother's house constantly changed and evolved as pieces came and went. She went on to study graphics and interiors at the Massachusetts College of Art & Design, followed by two years of internships and graphic design work in New York. This foundation in graphic design – including time in the studio of the legendary Milton Glaser – has informed Wearstler's enduring love of pattern and abstract art, both of which play an important part in her interiors, combined with disciplined layouts and uncluttered spaces.

Eventually, Wearstler decided to make the move to Los Angeles and, through a friend of a friend, started helping out with an interior design job. This, in turn, led to a commission for a house and soon one job followed on from another. With family homes in Hollywood and Malibu, the coast, landscape and history of California have long offered vital sources of inspiration for Wearstler.

"There are a lot of different types of architecture in Los Angeles and a tonne of creative influences, whether it's the movies, or buildings or graphics," she says. "Because I live in Hollywood and many of my clients are celebrities and artists in

their own right, and very inspirational in themselves, the whole package could be called 'Hollywood Glamour'. But we do look at every project individually and see it as a fresh start. We learn something new in each project and that carries us forward."

Today Wearstler's studio includes 50 designers, architects, graphic designers and art directors, with projects ranging in scale from product design to the epic re-development of Westfield's Century City shopping complex in Los Angeles, which completed at the end of last year. Wearstler has also found time to explain her 'more is more' design philosophy in a number of books, including 'Modern Glamour' and 'Hue', with a new volume due out next year. The Wearstler brand has expanded over time to include a broad lifestyle concept, including furniture, lighting and homeware.

Wearstler's successful collaborations with Ann Sacks and Lee Jofa – both of whom have showrooms at Design Centre, Chelsea Harbour – have continued over many years. Wearstler is adding new designs to her geometric *Liaison* series of stone mosaic tiles for Ann Sacks, as well as launching a fresh line of encaustic tiles, hand made in Vietnam, next year. She has also just finished work on two new collections for Lee Jofa, with recent ranges of fabrics and textured wallcoverings drawing inspiration from the Bauhaus and turn of the century Vienna.

Rather than adopting a five or ten year plan, Wearstler sees her portfolio growing organically over time as fresh opportunities come along. She is talking about a new project in London, another in Asia, and would love to work in Europe when the time is right. Increasingly, Wearstler is looking well beyond the West Coast, taking her unique take on glamorous mixology further afield.

"I'm always working to continue the journey," Wearstler says. "There's a tonne of things that I would like to do and I love working in new locations around the globe because travel is so important to me in terms of opening my eyes to new things. I love working with new architects, landscape designers and chefs – all the people that you collaborate with on hotels and residential projects. If someone came along and said let's do a boat or a museum I would be all over it. You have to live in the moment and have a real passion for what you do."



ABOVE LEFT: Kelly Wearstler's fourth collection for Lee Jofa, which includes printed and laser-cut leather, velvets, embroideries and jacquards. The geometric 'Rarity' velvet (on foreground stool) is shown against a backdrop of complementary 'Rarity' wallpaper ABOVE RIGHT: Charmaine's, the penthouse lounge at Proper Hotel San Francisco.

RIGHT: Proper Hotel's expansive Salon is arranged into a series of "living room vignettes", each with its own identity and witty mix of art and design



Sanderson
PAINT

*Designed
for life*

Visit stylelibrary.com/sandersonpaint
to buy online or find your local retailer
#mysanderson



Photo: @Michael Franke

The Retail Revolution

SHOWROOMS AREN'T JUST SHOWROOMS ANY MORE: THEY'RE TURNING INTO CULTURAL HUBS, CENTRES FOR NETWORKING OR HOMES-FROM-HOME, ALL IN A BID TO ENGAGE THEIR AUDIENCE AND PROVIDE A COMPELLING REASON TO RETURN, WRITES EMILY BROOKS

Shopping habits across almost every area of retail are rapidly changing – which means that real-world retail spaces have to work harder than ever to get their customers through the door, and keep them there. “We are seeing a radical shift in consumer habits,” says designer Christopher Jenner, who has reshaped global brands from Kusmi Tea to Diptyque with his captivating retail design. “Consumers now are completely connected and informed – they know what’s happening in the market place. This sense of awareness creates more demanding customers who want more in return for their choices. The challenge to brands is to find ways in which they can tell their stories and engage with consumers on a more experiential, sensorial level.”

Jenner recently completed a project for heritage fragrance brand Atkinsons. Founded in 1799, the company has been relaunched by new Italian owners, with the opening of a new flagship on London’s Burlington Arcade. Fragrances are for sale on the ground floor, while upstairs is a private ‘salon’ that is styled “as a contemporary take on a Georgian drawing room – a space to receive and entertain guests,” says Jenner. Original bottles and account books from the archives are on display, and all the soft furnishings and wallcovering were sourced from Pierre Frey, chosen in part “due to their bespoke textile offer, an important quality that accentuated the uniqueness of the spaces.”

Sumptuous VIP spaces have become the norm for luxury flagships, an important way that brands can make their customers feel more valued and satisfy a need for discretion.

ABOVE: The private salon at Atkinsons, part of a new flagship for the heritage fragrance brand in London’s Burlington Arcade. The interiors, by Christopher Jenner, were conceived as a modern take on the Georgian salon, using textiles and wallcoverings from Pierre Frey



A skip away from Atkinsons, on New Bond Street, Boutique Cartier is currently undergoing a sophisticated redesign, including its private suites. The design has had input from Rubelli/Donghia, with wallcoverings and fabrics from Rubelli complementing Donghia lamps and mirrors.

Private meeting areas are now more common in many of the showrooms at Design Centre, Chelsea Harbour too, a reflection of that same need for discretion and deliberation, especially when it comes to bespoke projects. Custom-made pieces are a part of almost every high-end scheme now, and, according to Hilary Gustafsson, managing director of Summit Furniture, they have become a way that designers can demonstrate their value to their clients. In a world where homeowners can buy things with one click, it takes expertise to tackle bespoke design, as well a close relationship with suppliers to turn things around quickly when need be. “I am a huge believer in building relationships. That, to me, is really critical,” she says. “It helps us to get to know what our trade clients need and want, and they feel like they can come to us, so it’s a bit more of a collaboration.”

Real-life retail – as opposed to virtual retail – bucks the trend at Design Centre, Chelsea Harbour, with showrooms in greater demand than ever. Christopher Peacock, McKinnon and Harris, Flexform, Romo and Wired Custom Lighting are just some of the names that have expanded their existing space, and increased demand will also be met by the opening of the new Design Centre North, which will offer an additional 8,000 sq ft of creative brilliance.

“The challenge to brands is to find ways to tell their stories and engage with consumers on a more experiential, sensorial level”

The industry’s buzzword is ‘experiential’: offering that extra something that internet shopping cannot. In the case of Design Centre, Chelsea Harbour, there is not only value added through carefully detailed showrooms (backed by the hugely knowledgeable people who work there) but through an exciting roster of high profile events, curated exhibitions, workshops, talks with a stellar line-up of international speakers and regular design discovery tours.

At the recent Superyacht Design Forum, 30 workshops were held across showrooms on subjects such as future materials and sustainability. Summit Furniture’s Hilary Gustafsson describes the event as “very well attended.

I thought it was fabulous. I find that the very best way to get to meet people is in this sort of slightly more social or educational environment. It’s not a hard sell.”

For Crestron EMEA, which also hosted a Superyacht workshop on interactive technology, it was just one of a host of events that happen throughout the year. As a technology company, unlike other design showrooms, its offering is entirely about having an engaging experience. “Until we had our showroom, it was a real struggle to show what we were about. You could give people a touch-panel, or show them pictures of past projects, but those are so static,” says Petra van Meeuwen, Crestron’s media relations director. Now, Crestron’s space – styled as a series of rooms – can truly bring that technology to life. On top of that, events from the specialist (CPD courses for interior designers) to the social (wine tasting) ensure that new audiences are being introduced all the time. “Our calendar is

ABOVE: Summit Furniture hosting an event during Superyacht Design Forum OPPOSITE, CLOCKWISE FROM TOP LEFT: Boutique Cartier, newly refurbished with products from Rubelli/Donghia; GP & Baker’s ‘Hydrangea Bird’ archive document, inspiration for a collaboration with H&M; art on show at the East Meets West event; new collections brought to life at Jim Thompson; a Design Discovery Tour during East Meets West; tile painting workshop at Artisans of Devides, part of an event dedicated to contract interiors



NOBILIS

P A R I S

fabrics, wallpaper, rugs & furnitures



quite packed,” says van Meeuwen. “It’s how we try to reach potential customers, influencers, press – the whole lot.”

Espresso Design also focuses heavily on the interactive – after all, how do you know what you need from a kitchen until you try it? The combination of a working kitchen and culinary demonstrations has proved a winning one, according to director Andrew Hamilton-Barr. “Even knowledgeable clients can find the variety of choices available too much to take on board in a brief showroom visit, but an interactive event based around a talk, demonstration or presentation provides a much better context for understanding current trends, finishes and products.”

“By incorporating at least one working kitchen in the showroom, we can invite clients to enjoy great food, freshly cooked, while they enjoy a few drinks in an informal, relaxed atmosphere. Food and cooking have universal appeal, and we find it helps to break down business barriers and build relationships.”

New audiences have also been discovering the work of esteemed fabric house GP & J Baker, via a collaboration with fashion retailer H&M, which has used archive prints on a capsule collection. “We really felt it was important to bring the collection to life in our showroom,” says Ann Grafton, managing director and creative director of GP & J Baker. “We have incorporated the fashion collection, on H&M

mannequins, to sit alongside the iconic fabrics that inspired it. Each fashion item is presented alongside the history of the featured print, sharing the story of origin and in many cases an archive print or the original drawing of the design. It has been wonderful bringing the collaboration to life in our showroom and sharing a little of the history behind these enduring, iconic designs.”

Frequently, ‘experiential’ design is conflated with something interactive and technology-focused – digital touchpoints in-store, futuristic fitting rooms that offer customers style advice – when it could mean simply creating a very high-quality environment that people feel so good about visiting that they want to go back to. For example, Turnell & Gigon at Home’s pop-up

is redesigned by a star designer every few months as a fully styled room (this autumn sees Kit Kemp of Firmdale Hotels put her inimitable stamp on it, inspired by the Caribbean). It allows visitors to understand the creative possibilities of Turnell & Gigon’s products in a way that rails of fabrics and wallpaper sample books never could – with the added bonus that it’s so Instagram-friendly that the space gets seen all over the globe on social media. So while we all want a real-life retail experience to counteract the impersonal nature of internet shopping – we also want the digital universe to know all about it, too.

“A talk, demonstration or presentation provides much a better context for understanding current trends, finishes and products”

ABOVE LEFT: Artist Alexander Hamilton takes part in a Meet the Designer event at Lewis & Wood, unveiling his ‘Beech’ wallpaper to an appreciative audience ABOVE RIGHT: Espresso Design invited chef Tom Aikens into its demonstration kitchen, as part of a wider series of workshops at Design Centre, Chelsea Harbour to engage the senses

www.nobilis.fr

Sea Change

MULTIDISCIPLINARY DESIGN STUDIOS CAN WORK ACROSS LAND AND SEA, WITH CUTTING-EDGE RESULTS – AND WITH ONE TYPE OF PROJECT OFTEN INFLUENCING ANOTHER, SAYS TICKY HEDLEY-DENT

Albert Einstein famously said, “the measure of intelligence is the ability to change,” but from a designer’s perspective perhaps the measure of creativity is the ability to be adaptable and evolve. Whilst some designers are known for a specific house style, many of the most exciting interiors are coming from the multidisciplinary studios, which often have their roots in yacht design. Previously, superyacht and interior designers existed in separate worlds – but now there is a healthy degree of cross fertilisation.

One of the most well-known multidisciplinary practices is Studio Indigo: “Regardless of the type of project, we always work with clients to maximise the use and sense of space; using techniques such as developing a rational and logical layout to create good internal flow, bringing in natural light or accentuating the height, increasing the volume of a space and often use interior tricks such as mirrors to reflect light and space,” says their joint managing director, James Kandutsch.

Tricks learnt from yacht interiors, for example, can be equally useful on land. “On the conversion of an artist’s studio to a home, we engineered James Bond-style automated glazed ceilings over a winter garden and gull-wing type glazed mansard windows to connect the interior spaces with the outside, much like on yachts that often employ the next-level of design wizards to enhance the client’s experience of being at sea,” says Kandutsch.

Whilst creating a feeling of being at sea may have been the brief for the land-based winter garden, on the superyacht *Joy*, “we wanted to ditch the usual boat-like details – inspired by the client’s aspiration to create a sophisticated, yet comfortable home at sea,” says Kandutsch. “We did this through designing parts of the interior

LEFT: US hospitality designer Adam Tihany has worked with cruise company Seabourn to design some of its cruise ships. This is the Observation Bar at the *Seabourn Encore*; the concept was to create the feeling of a private luxury yacht on a much larger vessel





ABOVE: On board superyacht *Here Comes the Sun*, Winch Design used Design Centre, Chelsea Harbour as a major resource, with products from Samuel & Sons, Zimmer + Rohde, Dedar, Lizzo, Fox Linton, Perennials, Porta Romana and Sahco. OPPOSITE, FROM TOP: One of the proposed vessels in the Ritz Carlton Yacht Collection, due to set sail in 2020; the salon of superyacht *Joy*, designed by Studio Indigo, featuring fabrics from J. Robert Scott and GP & J Baker, among others; *Seabourn Ovation*, designed by Adam Tihany

such as the furniture to look less built in and layering the spaces with soft furnishings, incorporating bold textures and colour to add sense of identity to the interior spaces.” The textured fabrics in the main salon included embroidered and silk velvet cushions from Holland & Sherry, striped cushion fabric from J. Robert Scott, geometric fabric on the ottomans from GP & J Baker, sheer Holly Hunt blinds and graphite curtains in ‘Edwin’ from Colefax and Fowler – all sourced at Design Centre, Chelsea Harbour.

Simon Rowell, creative director of Bannenberg & Rowell, a well-established multidisciplinary studio, does not have a fixed view when approaching projects. “We don’t tend to think of ‘sectors’: residential, land-based, aviation, yachts etc., though of course each area has its own specific set of requirements, and each client project brief may take a lead from the different environment or function. So, fundamentally the design direction may be informed early on by the client’s own vision, however loose that may be at the outset.” He is quick to point out the obvious difference is that buildings are static with a flow of people whilst yachts, aircraft or road vehicles are vessels for transport and as a result, “there is also an undeniable emotional influence to the design of moving craft, in the form of movement, environment and secondary activity.”

Having made their name in award-winning superyachts, it is perhaps not surprising that they have been asked to work on land-based projects near water. On a lakeside project in Geneva, the dining room “was fairly clearly inspired by yacht furniture, form

and detail, and features a certain solidity that one might expect from a built-in, fixed interior.” It features custom carpets from Stark Carpet and decorative lighting from Porta Romana, both with showrooms at Design Centre, Chelsea Harbour.

The Design Centre is a major resource for Winch Design, a multidisciplinary studio that specialises in yachts and aviation, as well as land-based projects. On the superyacht *Ace*, “we did a huge amount of custom work,” says Kate Maclaren, senior manager of interiors. “We sourced a huge amount of fabrics and embroidery from Holland & Sherry and Lelièvre Paris. The design for this space was to embrace the feeling of being by the sea with a British colonial feel.” The Design Centre was also a major resource for superyacht *Here Comes the Sun*, where Winch Design used products from Samuel & Sons, Zimmer + Rohde, Dedar, Lizzo, Fox Linton, Perennials, Porta Romana and Sahco in the interior.

If a multidisciplinary studio gets it right the possibilities are endless, “Winch Design is able to create a lifestyle and therefore in turn must be adaptable. We have many returning clients who after purchasing a yacht decide they would like an aircraft as well,” says Maclaren.

Hospitality design is another area where specialised designers flex their creative muscle. One of the most preeminent in this field is renowned New York-based designer Adam Tihany. He too enjoys the challenge of a floating interior, and has bought his unique style to luxury cruise ships *Seabourn Encore* and *Seabourn Ovation*, among others. “Hospitality design is about crafting an experience,

regardless of whether it is on land, in the air, or at sea. What makes designing the interiors of a cruise ship so interesting – and, in many ways, challenging – is the fact that we have a captive audience. This is quite different than a resort on land, where guests move freely in and out,” says Tihany. “Cruise guests stay onboard for days, sometimes months at a time, so we must be very cognisant in designing spaces that have long lasting appeal – and at the same time, manage to surprise travellers. For *Seabourn Encore* and *Seabourn Ovation*, the concept was to create the feeling of a private luxury yacht on a 300-suite cruise ship. The design is anchored in inviting curves, and every element – from colours and materials to details such as railings and hardware – aims to capture that feeling of a luxury yacht”. Poltrona Frau, Pierre Frey, Sekers and Rubelli were just some of the brands available in the Design Centre that were used on these projects.

Kelly Hoppen is another interior designer who has worked on cruise ship interiors with her work on *Celebrity Edge* for Celebrity Cruises. “Cruise ships and luxury go hand-in-hand and that timeless glamour is something I really wanted to shine through in the interiors on *Celebrity Edge*, as the decor is such a huge part of the experience when travelling,” says Hoppen.

The demand for a more intimate and luxury experience at sea is behind the Ritz-Carlton Yacht Collection, which has plans for three bespoke yachts, the first of which will set sail in 2020. Doug

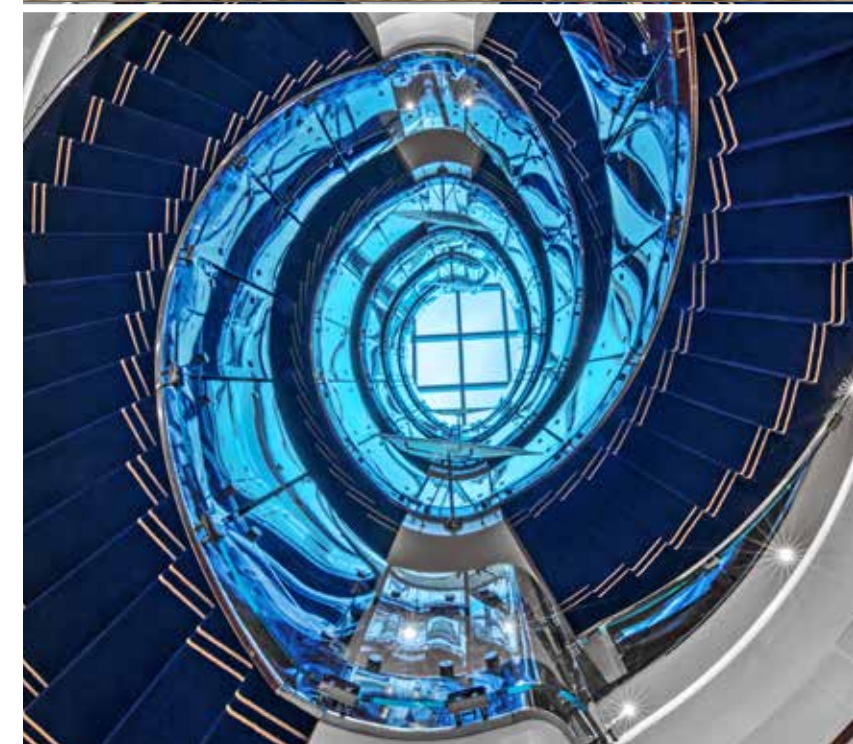
“Cruise guests stay onboard for days, sometimes months at a time, so we must be very cognisant in designing spaces that have long lasting appeal”

Prothero, CEO of the Ritz-Carlton Yacht Collection says, “our goal is to introduce the legendary Ritz-Carlton service to luxury yachting, while also redefining curated travel at sea.”

It is not just off-shore interiors that push the boundaries. The project that is exciting the team at multidisciplinary practice Taylor Howes, which is celebrating its 25th anniversary, is a heritage one in the Cotswolds. “Upon completion it will be the largest new-build thatched house in the UK,” says CEO and founder Karen Howes – and much of the interior has been sourced from the Design Centre. Diversity, it seems, is the creative juice flowing through a designer’s veins.

“I like adapting to different projects because I find exploring different narratives interesting,” says interior designer Fran Hickman whose work includes the Chess Club and the Moda Operandi store. At Moda Operandi the feeling of a travelling trunk show was created by bespoke furniture and lighting and “personal, private spaces were constructed from ribbon-lined, made-to-measure dressing screens.”

Creativity has clearly always been a part of any interior designers remit but now the opportunities to work on very different projects on land or at sea are there for the taking. The use of cutting-edge new materials, custom finishes and innovative use of space, which are so common on superyacht design are now being used on bespoke land-based projects; whilst land-based interior designers can sometimes bring a different perspective to on-board interiors. Whatever the interior the first point of call is a visit to Design Centre, Chelsea Harbour.



Designs to Inspire

FROM A SPECTACULAR GARDEN ROOM TO A ROOFTOP BAR, THE PROJECTS FEATURED IN THIS ISSUE ARE SURE TO INSPIRE. PICK UP SOME IDEAS TO GET THE LOOK

Garden Room

The beating heart of Annabel's is the spectacular, secluded Garden, covered by a one-of-a-kind retractable glass roof. Here, flora and fauna abound in a riot of colour, pattern and texture that beguiles, layer on layer. Recreate the lush foliage with 'Richmond Park' wallcovering from Zoffany, Villa Nova cushions and seat covers depicting an earthly paradise made from 'Shangri-La' fabric by Pepe Peñalver at Lizzo. For year-round dining, pull up a black woven 'Sag Harbor' chair from Sutherland Perennials Studio, add a smart 'Scroll Footed' metal table from McKinnon and Harris and some handcrafted 'Ely' lanterns from Vaughan. For real indulgence, add plenty of decorative trims such as the 'Chevallerie' scalloped tassel fringe from Samuel & Sons.



The Bar

When the elevator doors open 120 feet above San Francisco to unparalleled views of the City by the Bay, you know that you have entered Charmaine's, the rooftop bar and lounge at the Proper Hotel. Designed by Kelly Wearstler, the look is laid-back with an eclectic, retro mix. Evoke the mid-century modern feel with a 'Hackney' side table by Bert Frank at Decca and a No 1382 deco knob in light pewter from The Nanz Company. Add colour with a 'Hudson' stool by Alexander Lamont at Miles x Bookshop, a soft, blue 'Caverns' rug from Tufenkian Artisan Carpets and 'Rose Absolute Linen', a romantic floral print from Zoffany. Monochrome geometrics like the 'Marlene' rug by Topfloor by Esti add punch, while 'Maven Solstice' tiles that Wearstler designed for Ann Sacks can be found at West One Bathrooms.



The Sitting Room

Australian-born designer Peter Mikic is known for his confidence with colour. Create the look by mixing zingy 'Jacaranda' plain fabric from Houllès with exotic cushions from the Masterpieces collection at Zimmer + Rohde. Add painterly 'Domino' wallcovering by Elitis at Abbott & Boyd, and inject more pattern and cosiness with soft, vibrant flooring like the 'Zucca' rug by Missioni at Stark Carpet. Quirky finds such as the turquoise 'Peony' vase from Porta Romana add interest, while the 'Brass Cube' side table from Birgit Israel helps light bounce around the room. Proof positive that bright, sunny hues can feel both harmonious and exciting when combined together.



The Bedroom

Kettner's, one of London's most famous, and oldest, restaurants, has a new lease of life thanks to new owners Soho House Group. Recreate the raffish Jazz Age look of one of the 33 'French boudoir-style' upstairs bedrooms with a scheme that is full of character and rich with pattern and texture. Start with Morris & Co's 'Seaweed' wallcovering, 'Acantha' fabric from Colefax and Fowler and a statement 'Penelope' bed from Savoir Beds. Vintage elements can be achieved with a 'Marlborough' slipper bath from Victoria + Albert Baths, a 'Nuvolari' armchair by Rubelli Casa at Rubelli/Donghia and a pair of 'Dita' terracotta orange lamps from Paolo Moschino at Nicholas Haslam Ltd.





Kasai wallpaper. Cushions in Alcantara, Parada, Kasai, Starleaf, Dhara Stripe. Baxter Ottoman in Mitford.

THIBAUT

Paramount Collection: Wallpaper, Print and Woven Fabrics

available through Jacaranda Carpets, Second Floor, South Dome

www.thibautdesign.com tel: 020 7737 6555

Who's Who

THE COMPLETE COMPENDIUM OF ALL THE SHOWROOMS AT
DESIGN CENTRE, CHELSEA HARBOUR AND WHERE TO FIND THEM

ABBOTT & BOYD

Abbott & Boyd is a leading resource for innovative and beautiful wallcoverings, fabrics and accessories from France and Spain.
First Floor, North Dome
+44 (0)20 7351 9985
www.abbottandboyd.co.uk
sales@abbottandboyd.co.uk

ALTFIELD

Altfield is a leading resource for beautiful textiles, wallcoverings and leather, distributing a number of high-end lines from around the world.
Second Floor, Centre Dome
+44 (0)20 7351 5893
www.altfield.com
showroom@altfield.com

ALTON-BROOKE

A magnificent collection of hand and machine woven fabrics, trimmings, wallpapers and rugs from the traditional to the contemporary. In superb colourways and designs, they reflect the latest directions in interior decoration.
Second Floor, Design Centre East
+44 (0)20 7376 7008
www.alton-brooke.co.uk
sales@alton-brooke.co.uk

ARTE

Arte is a passionate designer and manufacturer of sophisticated wallcoverings. The company, owned by the family Desart, has been in business since 1981. Arte wallcoverings adorn the walls of both residential homes and commercial interiors in over 80 countries worldwide.
Second Floor, Design Centre East
+44 (0)800 500 3335
www.arte-international.com
showroom.london@arte-international.com

ARTERIORS

For 30 years, Arteriors has provided luxury lighting, furniture and accessories to discerning commercial and residential designers worldwide. From the understated

to the unexpected, it offers an extraordinary selection of inspired designs.

Third Floor, Design Centre East
+44 (0)20 7929 8015
www.arteriorshome.com
london@arteriorshome.com

ARTISANS OF DEVIZES

Artisans of Devizes has been inspiring homeowners, interior designers and architects for over 25 years with natural stone flooring, porcelain, encaustic tiles, decorative floor and wallcoverings, and bespoke stone creations of outstanding quality worldwide.
Third Floor, Design Centre East
+44 (0)20 3302 9996
www.artisansofdevizes.com
info@artisansofdevizes.com

BAKER

For more than a century, Baker has been the hallmark of design excellence and uncompromising quality, creating furniture with classic sensibility in form, finish and function. Indoor and outdoor furniture from McGuire is also available.

First Floor, South Dome
+44 (0)20 7823 3612
www.bakerfurniture.com
www.mcguirefurniture.com
bkrchelseaharbour@bakerinteriorsgroup.com

BAKER LIFESTYLE

Baker Lifestyle's innovative collections are specifically designed to work together. Large- and small-scale prints, novel embroideries, versatile weaves and pretty sheers offer the key to stylish and relaxed decorating.
Ground Floor, Design Centre East
+44 (0)20 7351 7760
www.gpjbaker.com
sales@gpjbaker.com

BEAUFORT COLLECTION

Bespoke soft furnishings, including made-to-measure curtains and blinds, sofas, chairs,

beds, bedlinen, cushions and rugs. Incorporating the Leolux boutique: a resource for designers looking for unique and beautiful contemporary furniture.
Third Floor, North Dome
+44 (0)20 7561 4714
www.beaufortcollection.com
info@beaufortcollection.com

BELLA FIGURA

Bella Figura's exclusive lighting range covers the entire style spectrum from retro to transitional – through to modern and ultra-contemporary. Everything is designed in London and made in England or Italy.
Ground Floor, South Dome
+44 (0)20 7376 4564
www.bella-figura.com
showroom@bella-figura.com

BESSELINK & JONES

English lighting since 1959, beautiful traditional and modern lighting all made in their London workshop. The range includes floor lamps, wall sconces, table lamps, hanging lights and wonderful lampshades. With a team of engineers and artists they supply sumptuous pieces to hotels, clubs and homes throughout the world.
First Floor, Centre Dome
+44 (0)20 7351 4669
www.besselink.com
enquiry@besselink.com

BIRGIT ISRAEL

Birgit Israel is renowned for sourcing an inspiring collection of vintage and antique pieces for your interiors, as well as handmade luxury furniture. Using exceptional materials such as brass, bronze and vellum parchment, the highest possible quality of design is achieved.
Ground Floor, Design Centre East
+44 (0)20 7376 7255
www.birgitisrael.com
info@birgitisrael.com

BLACK & KEY

Black & Key designs and makes timeless and versatile bespoke furniture and accessories with sophisticated finishes, handcrafted in the UK to the highest standards of craftsmanship. Designs suit both contemporary and traditional spaces.
First Floor, Design Centre East
+44 (0)20 7351 7989
www.blackandkey.co.uk
mail@blackandkey.co.uk

BRIAN YATES

Brian Yates continues to inspire with a wide selection of innovative wallcoverings in every conceivable colour and texture. Fabulous designs from Armani, Etro and Missoni add to the interesting mix. The beautiful fabrics from Sheila Coombes add more creativity, style and colour.
Ground Floor, South Dome
+44 (0)20 7352 0123
www.brian-yates.co.uk
sales@brian-yates.co.uk

BRUNSCHWIG & FILS

Established in 1900, Brunschwig & Fils has a long legacy of design, exceptional quality and superb craftsmanship. Decorative fabrics, wallcoverings and trimmings have been used in some of the world's most iconic interiors.
Ground Floor, Design Centre East
+44 (0)20 7351 7760
www.gpjbaker.com
sales@gpjbaker.com

C & C MILANO

C & C Milano produces exquisite fabrics, offering textile innovation and the exclusivity of unique handmade items of the highest standard, in line with excellent 'Made in Italy' quality.
First Floor, Design Centre East
+44 (0)20 3583 3303
www.cec-milano.com
london@cec-milano.com

CAFE – SECOND FLOOR

Design Centre East is creating a serious buzz with an influx of new arrivals. Visit the café by Absolute Taste. It is the perfect pit-stop once you have scoured the showrooms for every last detail for your project. Opening hours 9am–4pm.
Second Floor, Design Centre East

CECCOTTI COLLEZIONI

Based in Tuscany, Ceccotti Collezioni is recognised all over the world in the field of interior design for its ability to create pieces of furniture that are unique in their originality and constructive complexity.
First Floor, Centre Dome
+44 (0)20 7351 0263
www.ceccotticollezioni.it
info@ceccotticollezioni.co.uk

CHASE ERWIN

Effortlessly calm and understated luxury interior textiles and accessories. Exclusive UK supplier of Jerry Pair Leather and Ultrasuede.
Ground Floor, Centre Dome
+44 (0)20 8875 1222
www.chase-erwin.com
sales@chase-erwin.com

CHRISTOPHER HYDE LIGHTING

Christopher Hyde Lighting, the leading London lighting specialist, has a stunning, new contemporary range of handmade chandeliers, pendants and table lamps that is available in a variety of different finishes. It complements the hugely popular traditional collections familiar to customers.
Second Floor, Centre Dome
+44 (0)20 7351 0863
www.christopherhyde.com
sales@christopherhyde.com

CHRISTOPHER PEACOCK

Christopher Peacock is the renowned global brand of luxury fitted cabinetry and spectacular hardware adornments. Specialising in kitchens to libraries to fabulous dressing rooms, combining the finest of materials with exceptional joinery, paint finishes, tailor-made design and installation for the entire home. It remains the benchmark of taste and understated elegance.
First Floor, South Dome
+44 (0)20 7100 4423
www.peacockhome.com
london@peacockhome.com



COLE & SON

Cole & Son has been creating original and exceptional wallcoverings since 1875. Innovative, intelligent and artistic design is founded upon a strong heritage of family craftsmanship. Combining unparalleled style with the finest quality, the in-house design studio is dedicated to creating unique and innovative designs which help create beautiful, distinctive and inviting interior environments through colour and pattern.
Ground Floor, Centre Dome
+44 (0)20 7376 4628
www.cole-and-son.com
showroom@cole-and-son.com

COLEFAX AND FOWLER

Renowned for its classic English appeal, Colefax and Fowler has an elegance and subtlety that is admired the world over. Other fabric and wallpaper brands owned by The Colefax Group include Manuel Canovas, Jane Churchill and Larsen, each featuring their own notable signature style and colour palette.
Ground Floor, South Dome
+44 (0)20 7351 0666
www.colefax.com
uksales@colexfax.co.uk

COLONY

The Colony showroom distributes some of the top names in fabrics and wallcoverings. They range from classic 17th and 18th century-inspired lampas and damasks to the contemporary. Contract fabrics for the commercial and superyacht market are also on offer. At Colony you will also find Ardmore, Backhausen, Barbara Osorio, Casamance and Misia, as well as Link Outdoor fabric and furniture.

All have one thing in common – only products of the best quality.

Second Floor, Centre Dome
+44 (0)20 7351 3232
www.colonyuk.com
info@colonyuk.com

CREATION BAUMANN

Founded in 1886, Swiss Création Baumann is family run. The in-house creative team develops contemporary and trend-inspired collections to improve wellbeing in private and public spaces. Innovation, refinement and expertise are the values behind 600+ textiles for curtains, acoustic solutions, upholstery and systems, all manufactured in its own mill.
First Floor, Design Centre East
+44 (0)20 7226 7748
www.creationbaumann.com
info.uk@creationbaumann.com

CRESTRON EMEA

The Crestron EMEA showroom is the ultimate place to experience luxury home automation. With an emphasis on how to bring your style to life, it presents a discovery of how design meets technology with invisible personalised control of everything from audio, video, lighting, shades (including blinds and curtains), security and much more.
Second Floor, South Dome
+44 (0)20 7352 0028
www.crestron.com/showroom
showroom@crestron.eu

DAVID SEYFRIED LTD

David Seyfried Ltd, founded 35 years ago, creates stylish upholstered furniture to exacting standards. The collection of sofas, chairs and stools has universal appeal but also a strong English ethos at its core.
First Floor, Centre Dome
+44 (0)20 7823 3848
www.davidseyfried.com
info@davidseyfried.com

DAVIDSON

Davidson has an established international reputation for designing beautiful British furniture, with a highly acclaimed portfolio represented in some of the most luxurious residences, hotels and superyachts from across the world. With an ever-growing collection of finest free-standing furniture, it is celebrating 30 years of excellence and continues to expand internationally.
First Floor, South Dome
+44 (0)20 7751 5537
www.davidsonlondon.com
sales@davidsonlondon.com

DE LE CUONA

De Le Cuona is the purveyor of luxurious textiles and accessories, admired for superior quality linen, fine wool paisley, velvet and cashmere. A bespoke interior tailoring service is available. The showroom is a relaxing yet innovative space where clients can work on design projects with the help of an expert team.
Second Floor, North Dome
+44 (0)20 7584 7677
www.delecuona.com
info@delecuona.com

DECCA

Manufacturers of luxury furniture for residential, hospitality and contract markets through the Decca Home, Decca Hospitality and Decca Contract brands. Bringing ideas to reality, Decca also offers a bespoke service – from concept to execution – with guidance on design drawings, custom finishes and product installation. Decca knows how to build beautiful, precision-made furniture that truly fits your clients' needs.
First Floor, Design Centre East
+44 (0)20 7352 9578
www.deccalondon.com
deccalondon@deccafurniture.com

DEDAR

Founded in 1976, Dedar is a family-run fabric house that expresses a personal style with its cutting-edge contemporary collections. Dedar's fabrics combine precious yarns with research into fibre technology to offer various solutions for curtains, upholstery and wallcoverings of timeless elegance. Dedar is partner of Hermès for the production and distribution of its home fabrics and wallpapers collection, displayed in all Dedar showrooms.
Ground Floor, Design Centre East
+44 (0)20 7351 9939
www.dedar.com
showroomuk@dedar.com

DESIGN CAFE

From light bites to home-cooked dishes, the Design Café by Absolute Taste is a popular destination. Adjoining the bookshop, it is informal but oh-so-chic with something on the menu to suit every appetite. Drop by, book a table or order food from the takeaway menu. Opening hours 8.30am–5pm.
Ground Floor, North Dome
+44 (0)20 7351 5362

DESIGN CLUB

For working, relaxing or entertaining, the sleek Rabih Hage-designed club is an invaluable base for those in the design industry. Annual and day rates available. Membership enquiries welcome.
Third Floor, South Dome
+44 (0)20 7351 5842
www.dcch.co.uk
enquiries@designclublondon.com

DOMÉ CAFE

At the heart of the south dome, the Dome Café by Absolute Taste is a great place to grab a coffee, rest your feet and take in the buzz of the Design Centre. The café serves delicious home-made cakes and pastries, salads and sandwiches, all of which are available to take away or eat in. Opening hours 8am–5pm.
Ground Floor, South Dome

EDELMAN LEATHER

Edelman Leather is the premier luxury brand for interiors producing the greatest collection of quality leathers, with integrity and originality, to inspire the global design community who create the transformative spaces in which we live, work and explore.
Second Floor, Centre Dome
+44 (0)20 7351 7305
www.edelmanleather.com
hughk@edelmanleather.com

ESPRESSO DESIGN

Espresso Design is an interior design consultancy that specialises in contemporary furniture for kitchens, bedrooms and living spaces. The award-winning design team combines the latest technology with a signature Italian style to create innovative and luxurious residential interiors.
Second Floor, Design Centre East
+44 (0)20 7078 9912
www.espressodesign.co.uk
enquiries@espressodesign.co.uk

EVITAVONNI

Evitavonni offers a world of quiet elegance, subtle and ageless with a contemporary edge. The exceptional beauty of the textiles is borne out of founders Kate and Michel Erwich's passion for classic couture design, British craftsmanship and quality. Design Space, Third Floor, South Dome
Relocating in autumn/winter to:
Second Floor, South Dome
+44 (0)800 130 3180
www.evitavonni.com
chelsea@evitavonnilondon.com

FLEXFORM

Flexform entered the world of furniture made and designed in Italy just when the innovative cultural era of 'Italian Design' was dawning. Since then it has established a signature style by constantly developing shapes and forms, experimenting with new technologies and a creative use of new materials.
Ground Floor, South Dome
+44 (0)20 7376 5272
www.interdesignuk.com
flexform@interdesignuk.com

FOX LINTON

Fox Linton's classic natural fabrics are presented in a luxurious space with the world-renowned Loro Piana, Holly Hunt and Ensemble London.
Second Floor, North Dome
+44 (0)20 7368 7700
www.foxlinton.com
info@foxlinton.com

GALLOTTI&RADICE

Designed and handcrafted in Italy, for contemporary living. Blending tradition and technology, Gallotti&Radice offers a sophisticated mood for the luxurious home and office, including lighting, furniture, upholstery and decor accessories.
Second Floor, Centre Dome
+44 (0)20 7351 1384
www.gallottiradice.com
showroomuk@gallottiradice.com

GEORGE SPENCER DESIGNS

George Spencer Designs is a notable British fabric house regularly launching its own collections and representing carefully chosen names. With an emphasis on natural fibres, textural weaves and craft mills, the complete collection offers curtain and upholstery fabrics, wallpapers, trimmings and braids.
Third Floor, Design Centre East
+44 (0)20 7584 3003
www.georgespencer.com
sales@georgespencer.com

GIORGETTI

Giorgetti products are functional and made of long-lasting quality materials, using eco-friendly efficient technologies. The Made in Italy artisan production surpasses the logic of the standard product and guarantees a high level of customisation.
First Floor, Centre Dome
+44 (0)20 8616 9100
www.giorgettiteda.com
info@giorgetttilondon.com

GLADEE LIGHTING

Gladee Lighting is a leading designer and manufacturer of custom light fittings, decorative lighting installations and fixtures. The luxurious lighting reflects a lead crystal tradition and is notable for outstanding craftsmanship, unique designs and technology.
Third Floor, North Dome
+44 (0)20 3632 5757
www.gladee.co.uk
info@gladee.co.uk

GMR INTERIORS

Ozone Lighting, made in Paris, combines traditional craftsmanship with LED technology. Alongside, Delcourt, a daring designer of furniture and an ardent defender of French craftsmanship.
Third Floor, Design Centre East
+44 (0)20 7352 1079
www.gmr-interiors.com
office@gmr-interiors.com

GP & J BAKER

GP & J Baker has been producing beautiful prints, weaves and wallpapers for over 100 years and has acquired an outstanding textile archive. Its prints, mostly derived from the archive, have been adapted to meet today's tastes.
Ground Floor, Design Centre East
+44 (0)20 7351 7760
www.gpjbaker.com
sales@gpjbaker.com

HOLLAND & SHERRY

Successfully trading for 180 years supplying the finest cloths, Holland & Sherry has grown to develop collections that range from fabrics to wallcoverings, leather, hardware, lighting, trims, bespoke embroideries and custom rugs, all representing unparalleled quality and craftsmanship.
First Floor, North & Centre Domes
+44 (0)20 7352 7768
www.interiors.hollandandsherry.com
sales@hollandandsherry.co.uk

HOULES

Founded in 1928, Houles has built its reputation on the finest trimmings, which includes braids, piping cords, gimps, fringes and tie-backs. Nowadays, while maintaining this strong position it also specialises in the creation of high quality curtain poles and tracks alongside upholstery and drapery fabrics. Houles also owns Gilles Nouailhac, which specialises in classical and contemporary French furniture.
Second Floor, South Dome
+44 (0)20 7352 7450
www.houles.com
showroom.london@houles.com

IKSEL – DECORATIVE ARTS

Iksel – Decorative Arts offers sophisticated scenic and architectural wallcoverings. Established in 1988, its vast collection of hand-painted originals have been converted to digital format, and can be printed either as a bespoke design or as standard prints. In addition, there are all-around repeats, decorative panels, folding screens and a textile collection.
Second Floor, Design Centre East
+44 (0)20 7351 4414
www.iksel.com
london@iksel.com

INTERDESIGN UK

Since 1990, a passion for furniture and a commitment to offer the best in cutting-edge design for the interior has been the key to Interdesign UK's approach. On offer is a wide collection of contemporary furniture, lighting, fabric and accessories by the finest Italian brands.
Ground Floor, South Dome
+44 (0)20 7376 5272
www.interdesignuk.com
info@interdesignuk.com

J. ROBERT SCOTT

J. Robert Scott has been known for excellence in luxury furniture and textiles for more than 45 years. Founded by renowned designer, Sally Sirkin Lewis, it is a leading resource for bespoke furnishings.
First Floor, Centre Dome
+44 (0)20 7376 4705
www.jrobertscott.com
london@jrobertscott.com

JACARANDA CARPETS

Jacaranda Carpets hand weaves wool and TENCEL® broadloom carpets and rugs, creating luxurious textures and elegant colour tones, that reflect the light to produce a silky opulence. It uses ethical production practices without compromising quality, comfort or style. The showroom is shared with Thibaut and Anna French.
Second Floor, South Dome
+44 (0)20 7351 6496
www.jacarandacarpets.com
dcch@jacarandacarpets.com
dorota@thibautdesign.com

JASON D'SOUZA

A luxurious range of contemporary fabrics, innovative wallcoverings and wide variety of trimmings. Alongside Jason D'Souza's signature collection, renowned brands Agena, Decobel and



Wendy Cushing Passementerie are represented in the showroom.
First Floor, Centre Dome
+44 (0)20 7351 4440
www.jasonsdsouza.co.uk
info@jasonsdsouza.co.uk

JEAN MONRO
Jean Monro is renowned for reproducing classic English chintzes from archive documents. This is one of the very few companies still editing hand-blocked designs using the original blocks, which generally date from the 19th century.
Ground Floor, North Dome
+44 (0)20 7259 7280
www.jeanmonro.com
sales@jeanmonro.com

JENSEN BEDS
With an emphasis on sleep comfort, Jensen Beds has been producing and designing beds in Norway for more than 70 years. Providing maximum body support is the driving force behind ground-breaking innovations for the perfect night's sleep. Offering materials inspired by nature, meticulous craftsmanship and timeless design, its world-class beds meet the highest standards.
Third Floor, Design Centre East
+44 (0)20 3914 1262
www.jensen-beds.com/uk
jensenbeds.chelseaharbour@hildinganders.com

JIM THOMPSON
Jim Thompson is celebrated worldwide as an expert Thai silk heritage brand dedicated to creating quality, well designed, and durable fabrics. As one of the leading names in furnishing designs, Jim Thompson now offers a full breadth of luxury

furnishing fabrics and wallcoverings.
Second Floor, North Dome
+44 (0)20 7368 7700
www.jimthompsonfabrics.com
info@foxlinton.com

JULIAN CHICHESTER
Julian Chichester is primarily an individualist – a tastemaker rather than a follower – whose creative inspiration comes from classic English furniture-making, coupled with an admiration for innovation. As a manufacturer, the company has an enviable reputation for quality craftsmanship and original design, but the decoration, detail and unusual finishes are what set it apart from the crowd.
Ground Floor, Centre Dome
+44 (0)20 7622 2928
www.julianchichester.com
sales@julianchichester.com

KRAVET
Kravet is the world's acknowledged leader in home furnishings thanks to its commitment to innovation, exceptional quality and customer care. It represents famous designers and brands from around the world.
Ground Floor, Design Centre East
+44 (0)20 7351 7760
www.kravet.com
sales@gpjbaker.com

LACAZE LONDON
Lacaze is a London-based manufacturer of luxurious bespoke furniture including upholstery, cabinetry and metalwork. Each piece of furniture combines a passion for perfection with a dedication to providing quality with unrivalled service.
Third Floor, Design Centre East
+44 (0)20 3643 0797
www.lacazelondon.com
info@lacazelondon.com

LEE JOFA
Lee Jofa can trace its history back to the early 19th century. Two centuries of textile expertise has resulted in some of the most luxurious fabrics in the world.
Ground Floor, Design Centre East
+44 (0)20 7351 7760
www.leejofa.com
sales@gpjbaker.com

LELIEVRE PARIS
Contemporary designs and original editions. Since 1914, Lelièvre Paris has created and edited exclusive international collections of fabrics and coordinating home accessories. The fabrics represent an eclectic, audacious world with designs inspired by fashion, travel, art and

natural effects. Tassinari & Chatel is a brand owned by Lelièvre. Jean Paul Gaultier by Lelièvre is a licence and distributed exclusively.
First Floor, North & Centre Domes
+44 (0)20 7352 4798
www.lelievreparis.com
enquiries@lelievreparis.com

LEWIS & WOOD
Lewis & Wood is a British supplier of beautiful and unusual fabrics and wallpapers. The company collaborates with artists from different artistic disciplines to produce two original collections a year. The showroom is also home to the Blithfield fabric and wallpaper collections.
First Floor, Design Centre East
+44 (0)20 7751 4554
www.lewisandwood.co.uk
london@lewisandwood.co.uk

LIZZO
Lizzo's objective as a textile editor is to show high standard decoration as an avant-garde stylish alternative. Refined and eclectic trends, natural and elegant style, Lizzo satisfies the needs of the most demanding interior designers all around the world.
Ground Floor, Centre Dome
+44 (0)20 7823 3456
www.lizzouk.co.uk
london@lizzo.net

MARC DE BERNY
Welcome to the talented and brilliant world of Marc de Berny with exquisite visions of furniture, lighting and decor, where elegance, chic, well-being and comfort always respond to two demands: the spirit of places and the expectations of their inhabitants. Bespoke products can also be manufactured for high-end residential and luxury hotel projects.
Ground Floor, Design Centre East
+44 (0)20 8616 0480
www.marcdeberny.com
info@marcdeberny.com

MARVIC TEXTILES
Marvic Textiles is a British family-owned business founded in 1938. Contemporary classics define the signature look. Specialist areas include upholstery fabrics, crewels, embroideries, linens and outstanding toiles. Marvic Textiles represents and shows James Hare in the showroom.
Ground Floor, South Dome
+44 (0)20 7352 3119
www.marvictextiles.co.uk
showroom@marvictextiles.co.uk

MCKINNEY GAINSBOROUGH
Proudly made in Britain, McKinney Gainsborough offers a complete solution for window furniture, curtaining, wallcoverings, handrails, and much more. Wonderful heritage and contemporary designs for bespoke and high-end contract projects.
Design Space, Third Floor, South Dome
Relocating in autumn/winter to:
Second Floor, South Dome
+44 (0)20 7627 5077
www.mckinney.co.uk
sales@mckinney.co.uk

MCKINNON AND HARRIS
World-renowned for exceptional handcraftsmanship, design, engineering, materials and creativity, McKinnon and Harris sets the standard for bespoke outdoor furniture. Uncompromising craftsmanship of timeless design begets high performance aluminium furniture unmatched for longevity and endurance.
Second Floor, North Dome
+44 (0)20 7349 9085
www.mckinnonharris.com
london@mckinnonharris.com

MILES X BOOKSHOP
A stylish concept masterminded by Miles de Lange. Browse the latest design books and discover furniture, lighting and objects by Alexander Lamont, wallpaper and textiles by rising star Kit Miles, alongside legendary designer John Saladino's fabrics, Livio de Simone handprinted textiles and furniture from Francesco della Femina, Julia von Werz and Virginia White.
Ground Floor, North Dome (outside)
+44 (0)7785 505760
www.milesdelange.com
miles@milesdelange.com

MULBERRY HOME
Mulberry Home draws inspiration from its English heritage while introducing new ideas and interpreting them with modern relevance. Sensual fabrics that marry function and fashion harmonise beautifully with strikingly individual wallpapers and trimmings.
Ground Floor, Design Centre East
+44 (0)20 7351 7760
www.gpjbaker.com
sales@gpjbaker.com

NADA DESIGNS
Nada Designs is proud to offer stunning passementerie, handmade in its own factory by artisan craftsmen. Complemented by wood, metal, painted and gilded curtain

poles and drapery hardware from The Holbein Company.
First Floor, Design Centre East
+44 (0)20 7349 8246
www.nadadesignsltd.com
info@nadadesignsltd.com

THE NANZ COMPANY
The Nanz Company manufactures beautiful hardware to please. Headquartered in New York, The Nanz Company's craftsmen create the finest handles, hinges, locks, and fittings. Combining beautifully designed products and a network of hardware experts, the process ensures clients' satisfaction. Whether of bronze, crystal, wood or semi-precious stone, the handles are extraordinary and on display in the Design Centre.
Fourth Floor, Design Centre East
+44 (0)20 3300 0099
www.nanz.com
ukpricing@nanz.com

NINA CAMPBELL
The first furniture-led showroom from Nina Campbell, one of the world's most respected and influential interior designers. Nina also designs fabrics, wallpapers and home accessories. Nina Campbell is the exclusive distributor of Oomph, a collection of high gloss painted furniture, made in America. Visit SA Baxter Foundry & Design Studio to view Nina's new door and cabinet ironmongery and Summit Furniture for her new collection of outdoor fabrics.
Ground Floor, Design Centre East
+44 (0)20 7352 9518
www.ninacampbell.com
furniture@ninacampbell.com

NOBILIS
Founded in 1928 by Parisian Adolphe Halard, Nobilis produces beautiful and diverse collections, which include fabric, wallpaper, furniture and rugs that blend traditional with contemporary.
Ground Floor, South Dome
+44 (0)20 7352 5323
www.nobilis.fr
nobilis@nobilis-fontan.co.uk

OFICINA INGLESIA FURNITURE
Oficina Inglesa Furniture has been making bespoke handmade furniture for over 30 years. It specialises in French reproductions and classic furniture, each piece can be adapted to a client's requirements of size, design or materials.
Third Floor, Design Centre East
+44 (0)20 7226 4569
www.oficinainglesa.com
info@oficinainglesa.com

ORIGINAL BTC
Founded in 1990, family-run lighting manufacturer Original BTC has evolved into the Original BTC Group of three lighting brands including heritage marine lighting manufacturer Davey Lighting, and LED specialist Beadlight. Suited to residential and commercial properties alike, lights are handmade in the UK at the Group's own metalworks, glassworks and bone china factory. Bespoke orders can be made upon request.
Design Space, Third Floor, South Dome
Relocating in autumn/winter to:
Second Floor, Centre Dome
+44 (0)20 7351 2130
www.originalbtc.com
showroom@originalbtc.com

PAOLO MOSCHINO FOR NICHOLAS HASLAM LTD
Continental chic at its most accomplished. The first interior design boutique at the Design Centre stocking an eclectic collection of lighting, furniture, fabric and accessories as well as a constantly changing display of antique and vintage pieces.
Second Floor, South Dome
+44 (0)20 7751 4262
www.nicholashaslam.com
sales@nicholashaslam.com

PERRIN & ROWE
Offering a premium portfolio of UK-manufactured brassware, chinaware and accessories for the kitchen and bathroom, Perrin & Rowe's beautifully crafted collections are available in a range of styles and finishes to suit both residential and commercial projects.
Third Floor, North Dome
+44 (0)20 7351 3085
www.perrinandrowe.co.uk
contracts@perrinandrowe.co.uk

PHILLIP JEFFRIES
Phillip Jeffries has emerged as the industry leader in natural, textured and speciality wallcoverings. A family-owned company founded in 1976, Phillip Jeffries works hand-in-hand with skilled artisans to create the design world's most beautiful and sought-after wallcoverings.
Second Floor, North Dome
+44 (0)20 7351 3333
www.phillipjeffries.com
uksales@phillipjeffries.com

PERSONAL SHOPPING SERVICE
Design Centre, Chelsea Harbour is a one-stop shop for all your decorating needs. With a little guidance from the Personal Shopping Service, navigate

VAUGHAN



Ground Floor, South Dome
Design Centre Chelsea Harbour
020 7349 4600
vaughandesigns.com



the famous showrooms with ease. A Designer Sourcing Service has been introduced to support busy design professionals. Design Club, Third Floor, South Dome +44 (0)20 7352 1900 carolinehughes@dcch.co.uk

PIERRE FREY
Pierre Frey, a family-owned company, founded in 1935, designs, creates and manufactures fabrics, wallpapers, carpets, furniture and home accessories in the purest French tradition. First Floor, Design Centre East +44 (0)20 7376 5599 www.pierrefrey.com contact.uk@pierrefrey.com

POLIFORM
Poliform is a well-established presence on the British interior design scene. Known for its sleek, modular wardrobes and library systems, and for its contemporary, minimalist Poliform kitchens, this Italian furniture producer can also provide beds, tables, sofas and armchairs, including stand-out pieces by celebrated designers and architects, in fact everything required to make a stylish, modern home. Includes Lualdi doors and lighting by Magic Circus, Nemo and Bomma. Free design service available. Ground Floor, South Dome +44 (0)20 7352 0064 www.poliformuk.com info@poliformuk.com

PORADA
Established in 1968, Porada has a wide and varied collection of occasional furniture. Everything is born from a passion for wood. Solid wood is worked with the

craftsmanship of those who know how to turn timber into a piece of artwork. First Floor, South Dome +44 (0)20 3155 3065 www.porada.it enquiriesuk@porada.it

PORTA ROMANA
Over the past three decades, the Porta Romana style has continuously evolved to become a leading global brand, and a critical ingredient in the world's most beautiful homes, yachts, hotels and film sets. Ground Floor, Centre & South Domes +44 (0)20 7352 0440 www.portaromana.com sales@portaromana.com

POTTERTON BOOKS
A warm welcome awaits you at Miles x Bookshop, where you can view an exciting range of the latest books on interior design and decoration, twentieth century, furniture, gardens, architecture and much more. Potterton Books also specialises in unusual out of print books and can source books on specialist subjects for bespoke libraries and designers' projects. Ground Floor, North Dome (just outside) +44 (0)20 7351 6854 ros@pottertonbooks.co.uk www.pottertonbooks.co.uk

PROVASI
Founded in Italy in the 1970s, Provasi is the result of four brothers' passion for design and craftsmanship. Their vision led to the creation of magnificent designs for the whole house: handmade furniture that is elegant and innovative, with unique shapes, carvings and inlays. Everything is designed, developed and made at Provasi's headquarters in Seregno, northern Italy. Second Floor, Design Centre East +44 (0)20 7352 0157 www.provasi.com inna@provasiagency.com

ROMO
Family run since 1902, The Romo Group offers a diversity of style across six distinct fabric, wallcovering and home accessories brands: Romo, Black Edition, Mark Alexander, Zinc Textile, Villa Nova and Kirkby Design, each presenting their own signature look and colour palette. First Floor, North Dome +44 (0)1623 750005 www.romo.com london.showroom@romo.com

RUBELLI/DONGHIA
Rubelli, a Venetian family company, is internationally renowned for its top-end furnishing fabrics and furniture. Residential and contract collections present both traditional and contemporary designs as well as indoor/outdoor ranges. The Rubelli Group includes Rubelli Venezia, Rubelli Casa, Donghia (furniture, textiles, lighting and accessories), Dominique Kieffer by Rubelli and Armani/Casa Exclusive Textiles by Rubelli. The showroom is the exclusive stockist of Charles Paris Lighting. Ground Floor, Design Centre East +44 (0)20 7349 1590 www.rubelli.com www.donghia.com info.uk@rubelli.com

SA BAXTER FOUNDRY & DESIGN STUDIO
SA Baxter designs and manufactures bespoke architectural hardware and lighting for high-end residential and commercial projects. Designs are cast in brass, bronze and white bronze base metals, and it offers one of the most comprehensive finish palettes in the industry. Third Floor, Centre Dome +44 (0)20 8196 2410 www.sabaxter.com hardware@sabaxter.com

SACCO CARPET
Sacco Carpet is the leadng producer of high-end luxury carpets for residential and hospitality venues as well as yachts and private aircraft across the globe. Third Floor, Design Centre East +44 (0)20 8191 8888 www.saccocarpet.com london@saccocarpet.com

SAHCO
Finest handiwork paired with traditional techniques and breathtaking innovation makes Sahco fabrics, wallcoverings, rugs and Home Collections masterpieces destined to transform your world, one room at a time. Ground Floor, Centre Dome +44 (0)20 7352 6168 www.sahco.com info@sahco.co.uk

SAMUEL & SONS
Samuel & Sons has long been a coveted source for the finest quality trimmings such as tassels, borders, braids, gimp, fringes and more. Offering exclusive collections with diverse materials, its selection of over 15,000 trims is eagerly sought after by designers and architects alike. Third Floor, Centre Dome

+44 (0)20 7351 5153
www.samuelandsons.com
info@samuelandsons.co.uk

SAMUEL HEATH
Samuel Heath manufactures beautiful taps, showers, bathroom accessories and architectural hardware, all of which are available in a variety of stunning finishes. From contemporary to classic designs, every collection is made in Birmingham with a mix of traditional skills and the latest in engineering technology. First Floor, North Dome +44 (0)20 7352 0249 www.samuel-heath.co.uk showroom@samuel-heath.com

SAVOIR BEDS
First created for The Savoy Hotel in 1905, every Savoir bed is hand-made to order in the UK, using skilled craftsmanship and the finest natural materials, tailored to deliver unsurpassed comfort. Bespoke upholstery and headboards allow a client to be fitted for the right bed, thus creating the perfect night's sleep. First Floor, South Dome +44 (0)20 7352 0302 www.savoirbeds.co.uk chelseaharbour@savoirbeds.co.uk

SIBERIAN FLOORS
For more than 20 years, Siberian Floors has manufactured exceptional wide plank flooring worthy of a lifetime of enjoyment. From its wide selection of products, you can mix and match patterns, colour, and plank size for the perfect formal or casual decor. Siberian Floors brings a new dimension to the word custom, as every plank is milled to order. Third Floor, Design Centre East +44 (0)20 8032 3451 www.siberianfloors.com info@siberianfloors.com

THE SILK GALLERY
The Silk Gallery's high-end contemporary and classic fabrics are UK manufactured. Bespoke colours are available. Simta's contract fabrics, faux leathers and sheers have now been added to the product range. Ground Floor, Centre Dome +44 (0)20 7351 1790 www.thesilkgallery.com info@thesilkgallery.com

SIMPSONS
Simpsons London is a family-run business, established in 1976 Norman and Sharon Yardy. The manufacturing base is near the

Yardy's family home in Brentwood, Essex. Simpsons offers a range of standard size mirrors and furniture as well as a complete bespoke service. Our range comprises of contemporary designs in a variety of exotic leather, elegant glass and modern wood finishes. Ground Floor, Design Centre East +44 (0)20 7352 0397 www.simpsonslondon.com sales@simpsonslondon.com

STARK CARPET
Renowned for its fine quality innovative carpets and rugs, Stark Carpet offers a diverse range of sophisticated and creative designs. Available exclusively to interior designers and trade professionals, Stark Carpet features more than 500 designs from luxurious residential to high-end commercial. Third Floor, South Dome +44 (0)20 7352 6001 www.starkcarpet.co.uk sales@starkcarpet.co.uk

STARK FABRIC
Old World Weavers, Grey Watkins, Fonthill, Cassaro and Luciano Marcato form the extensive range of products that the company offers. Stark Fabric always maintains the highest standards in design and quality. Third Floor, South Dome +44 (0)20 7751 5858 www.starkcarpet.co.uk/p/fabric www.starkcarpet.co.uk/p/wallcovering fabric@starkcarpet.co.uk

STUDIOTEX
Suppliers of fabrics to the contract, hotel and hospitality markets as well as residential projects. StudioTex has an extensive range of upholstery, wallcoverings and panel fabrics, drapery, faux leather and exotic skin. Second Floor, South Dome +44 (0)20 7352 8558 www.studiotex.co.uk sales@studiotex.co.uk

STYLE LIBRARY
Style Library is a one-stop destination for home inspiration. It is the place to find the widest and most diverse range of authentic British home and interior design products. It is the official home for six renowned British brands: Zoffany, Harlequin, Sanderson, Morris & Co., Scion and Anthology, and is the exclusive distributor in the UK for FR-One, the industry leader in inherently fire-retardant fabrics. First Floor, South Dome +44 (0)20 3903 3700 www.stylelibrary.com showroom@stylelibrary.com

SUMMIT FURNITURE
Internationally recognised for uncompromising quality and exceptional design, Summit Furniture offers the finest handcrafted teak furniture for residential, contract and marine environments. It also offers an exciting selection of performance fabrics. Third Floor, North Dome +44 (0)20 7795 3311 www.summitfurniture.com info@summitfurniture.co.uk

SUTHERLAND PERENNIALS STUDIO
The Perennials and Sutherland, LLC companies are comprised of Sutherland Furniture®, Perennials Fabrics® and David Sutherland. They are the acknowledged leaders in performance fabrics, rugs and outdoor luxury furnishings. Second Floor, North Dome & Third Floor, Centre Dome (opening autumn 2018) +44 (0)20 3904 6904 www.sutherlandfurniture.com www.perennialsfabrics.com london@thespstudio.com

SWD
UK leaders of the finest quality bespoke interior and exterior doors, offering an array of finishes including high gloss and real-wood veneers. SWD also supplies high security reinforced steel front doors and bespoke joinery. Third Floor, Centre Dome +44 (0)20 7376 7000 www.solidwoodendoors.com sales@solidwoodendoors.com

TAI PING
Tai Ping crafts couture-quality carpets, using the finest yarns, for superyachts, aviation and upscale residential interiors and premium commercial spaces. Fourth Floor, Design Centre East +44 (0)20 7808 9650 www.houseoftaiping.com london@taipingcarpets.com

THREADS AT GP & J BAKER
Threads epitomises glamour, style and cool sophistication with exciting collections of contemporary weaves, embroideries and artisanal prints. Ground Floor, Design Centre East +44 (0)20 7351 7760 www.gpjbaker.com sales@gpjbaker.com

TIM PAGE CARPETS
Tim Page has broadened its offering since expanding the showroom. Custom handmade rugs have been given a dedicated room

PH. GIONATA XERRA



RUBELLI CASA

LOLLO TUB CHAIR, SOPHIA POUF
ROSSELLINI COFFEE TABLE

GROUND FLOOR, DESIGN CENTRE EAST
CHELSEA HARBOUR, LONDON
WWW.RUBELLI.COM



and it continues to strengthen its broadloom and runner offering.
Ground Floor, Centre Dome
+44 (0)20 7259 7282
www.timpagcarpets.com
sales@timpagcarpets.com

TISSUS D'HELENE

Tissus d'Hélène is a boutique showroom specialising in artisanal fabrics and wallpapers from England, France, Belgium, Italy and America. Founder Helen Cormack has a passion for prints so expect a hugely diverse selection, most of which are hand-blocked or hand-screenprinted. There are also silks, linens, hand embroideries and velvets, many of which can be customised.
Fourth Floor, Design Centre East
+44 (0)20 7352 9977
www.tissusdhelene.co.uk
showroom@tissusdhelene.co.uk

TOPFLOOR BY ESTI

Breadth of choice, superb quality and in-house bespoke design by an internationally awarded designer are the trademarks of rug, carpet and wood-flooring specialist, Topfloor by Esti. The company designs and makes products for high-end hospitality, residential, marine and commercial projects globally.
Second Floor, South Dome
+44 (0)20 7795 3333
www.topfloorrugs.com
info@topfloorrugs.com

TUFENKIAN ARTISAN CARPETS

Tufenkian Artisan Carpets is recognised the world over for unparalleled handmade character, premium materials and timeless

design. Redefining the traditional handmade carpet industry by joining modern aesthetic and ancient craft.

Third Floor, Centre Dome
+44 (0)20 7352 8183
www.tufenkian.com
rmccalla@tufenkian.com

TURNELL & GIGON

Turnell & Gigon distributes the finest fabrics, trimmings and wallpapers from Europe and the USA. The eclectic collections range from the classic to the ultra contemporary.
Ground Floor, North Dome
+44 (0)20 7259 7280
www.turnellandgigon.com
sales@turnellandgigon.com

TURNELL & GIGON AT HOME

Turnell & Gigon has created a timeless Caribbean bedroom suite showcasing the variety of the fabric, trimming and wallpaper collections available in its adjacent showroom. Natural flooring from Tim Page Carpets anchors the scheme while furniture and accessories complete the look.
Ground Floor, North Dome
+44 (0)20 7259 7280
www.turnellandgigon.com
sales@turnellandgigon.com

TURNSTYLE DESIGNS

British craftsmen and artisans of luxury door and cabinet hardware. Turnstyle Designs recently won the Queen's Award for Export 2018. From handstitched leather to individually hammered handles, attention to detail is found in each product it makes.
First Floor, Design Centre East
+44 (0)20 3489 1040
www.turnstyledesigns.com
sales@turnstyledesigns.com

VAUGHAN

Vaughan specialises in the design and manufacture of lighting, furniture and textiles. The entire collection is on display in the showroom including chandeliers, lanterns, wall sconces, bathroom fixtures, table and floor lights.
Ground Floor, South Dome
(just outside)
+44 (0)20 7349 4600
www.vaughandesigns.com
uk-sales@vaughandesigns.com

VIA ARKADIA (TILES)

Via Arkadia supplies tiles in high quality Italian stone, marble, porcelain and glass, as well as designer sanitary ware and both

traditional and contemporary wood flooring and wallcovering.
Third Floor, North & Centre Domes
+44 (0)20 7351 7057
www.via-arkadia.co.uk
mail@via-arkadia.co.uk

VICTORIA + ALBERT BATHS

Victoria + Albert Baths is a British brand with a worldwide reputation for creating beautiful freestanding baths and basins made from a unique Volcanic Limestone™ material. Also discover brassware, furniture and accessories in modern and traditional styles.
Third Floor, North Dome
+44 (0)20 7351 4378
www.vandabaths.com
info@vandabaths.com

VILLEROY & BOCH

Timeless elegance, innovative design and outstanding quality: that is what the German brand Villeroy & Boch has stood for since 1748. Showcasing bathrooms & wellness and fine dining experience.
Third Floor, Design Centre East
+44 (0)20 8871 4028
info@villeroy-boch.co.uk
www.villeroy-boch.co.uk

WATTS OF WESTMINSTER

Harmony, craftsmanship and artistic detail has always been the main influences of the historical range of textiles, wallpapers, embroidery and passementerie at Watts. Born from a rich heritage of pattern making over the past 140 years, it has extensive experience in understanding the fine balance between luxurious textures, hues of jewelled colours and timeless elegance.
Third Floor, Centre Dome
+44 (0)20 7376 4486
www.watts1874.co.uk
sales@watts1874.co.uk

WEMYSS

Collections from Wemyss and Sekers are represented, offering a wonderful range of fabrics and wallcoverings for all interior design projects, from classic to contemporary for both residential and commercial interiors.
First Floor, South Dome
+44 (0)20 7376 4430
www.wemyssfabrics.com
wemyss@wemyss-showroom.co.uk

WEST ONE BATHROOMS

West One Bathrooms is a leading UK supplier for bespoke, innovative and diverse bathrooms. In 2016, West One Bathrooms became the exclusive distributors in the UK and Europe for Ann Sacks and Kallista. The showroom is dedicated to

showing the best of both brands and the latest in tile trends.
Second Floor, Design Centre East
+44 (0)20 3055 0802
cdcsales@westonebathrooms.com
westonebathrooms.com/chelsea-design-centre-showroom

WHISTLER LEATHER

Whistler Leather has an extensive collection of high grade leathers for the design industry. Short lead times, competitive pricing and a carefully considered product range make it a first choice for the worldwide design market.
Second Floor, South Dome
+44 (0)20 7352 4186
www.whistlerleather.com
info@whistlerleather.com

WIRED CUSTOM LIGHTING

Wired Custom Lighting creates distinctive lighting, illuminating luxury residences worldwide. With cutting-edge designs and expert craftsmanship, Wired produces lighting using the finest materials from around the world.
Second Floor, Centre Dome
+44 (0)20 7352 2921
www.wired-designs.com
info@wired-designs.com

WOOL CLASSICS

Wool Classics stocks over 500 unique carpets and hundreds of beautiful rugs to suit any interior. It also offers a full bespoke service for both rugs and carpets to allow you to create absolutely anything for the floor. In addition to the residential market, Wool Classics specialises in the hospitality and marine markets worldwide.
Second Floor, Design Centre East
+44 (0)20 7349 1560
www.woolclassics.com
sales@woolclassics.com

ZIMMER + ROHDE

The Zimmer + Rohde collection presents itself as a variation of the modern classic. Carefully coordinated colours and subtly combined designs exude long-lived and timeless elegance within six brands. Every atmosphere whether a belle époque villa or minimalist cube, can be individually combined with Zimmer + Rohde.
Ground Floor, North Dome
+44 (0)20 7351 7115
www.zimmer-rohde.com
info.uk@zimmer-rohde.com

Fabrics, Wallpapers, Carpets, Furniture & Accessories



Vadim & Ana, 135 rua da Misericórdia - Lisbonne

PIERRE
FREY
PARIS

PIERRE FREY London Showroom
 107 Design Center East, 1st floor
 Chelsea Harbour, LONDON SW10 0XF
 Tel : +44 (0)20 7376 5599 - Email : contact.uk@pierrefrey.com

Super Brands

MAKE SOURCING STRESS FREE WITH THIS A-Z LIST OF WHERE TO FIND MORE THAN
600 INTERNATIONAL BRANDS ON SITE

A Rum Fellow George Spencer Designs
ABA Interiors Altfield
Adam Aaronson Black & Key
Adam Bray Tissus d'Hélène
Adelphi Paper Hangings Tissus d'Hélène
Ado Zimmer + Rohde
Agena Jason D'Souza
Ailanto Design George Spencer Designs
Alan Campbell Tissus d'Hélène
Alcantara Altfield
Aldeco Stark Fabric
Alex Turco Via Arkadia (Tiles)
Alexa Hampton Collection Stark Carpet
Alexander James Accessories Simpsons
Alexander Lamont Miles x Bookshop
Alfonso Marina Paolo Moschino for Nicholas Haslam Ltd
Alger-Triton Wired Custom Lighting
Allan Knight & Associates J. Robert Scott
Allegra Hicks Turnell & Gigon
Altfield Altfield
Altamarea Espresso Design
Andre du Dauphine Alton-Brooke
Andrew Nebbett Designs Christopher Peacock
Ann Sacks West One Bathrooms
Anke Drechsel Birgit Israel
Anna French Jacaranda Carpets
Anna Jeffreys Design Tissus d'Hélène
Anna Lari Paolo Moschino for Nicholas Haslam Ltd
Anthology Style Library
Antoine D'Albiousse Alton-Brooke
Appiani Via Arkadia (Tiles)
Apsara Miles x Bookshop
Arch8 Whistler Leather
Archie Tollemache Tissus d'Hélène
Ardecora Zimmer + Rohde
Armore Colony
Ariostea Via Arkadia (Tiles)
Armani/Casa Exclusive Textiles by Rubelli Rubelli/Donghia
Armani wallcoverings Brian Yates
Art & Decor Alton-Brooke
Arte Arte
Arteriors Arteriors
Artisans of Devizes Artisans of Devizes
Aster Espresso Design
ATA Alton-Brooke
Aux Abris George Spencer Designs
Azucena GMR Interiors
Backhausen Colony
Baker Baker
Baker Lifestyle Baker Lifestyle
Barbara Barry (fabrics) Kravet

Barbara Barry (rugs) Tufenkian Artisan Carpets
Barbara Barry Collection (furniture & lighting) Baker
Barclay Butera Kravet
Bassett McNab Alton-Brooke
Beadlight Original BTC
Beaufort Collection Beaufort Collection
Beaumont & Fletcher Simpsons
Bella Figura Bella Figura
Benetti Stone Via Arkadia (Tiles)
Bernhardt Interiors Paolo Moschino for Nicholas Haslam Ltd
Bert Frank Decca



Besselink & Jones Besselink & Jones
Bette West One Bathrooms
Biden Designs David Seyfried Ltd
Bill Sofield Collection Baker
Birgit Israel Birgit Israel
Bisazza Via Arkadia (Tiles)
Black & Key Black & Key
Black Edition Romo
Blithfield Lewis & Wood
Bolier Decca
Bomart Chase Erwin
Bomma Poliform
Bora Espresso Design
Boråstapeter Cole & Son
Bordoni Leathers Alton-Brooke
Boussac Pierre Frey
Bowles & Bowles Original BTC
Branksome China Original BTC
Braqueniè Pierre Frey

Brentano Altfield
Brian Turner Trimmings Tissus d'Hélène
Brian Yates Brian Yates
Brochier Altfield
Bruce Fine Papers Watts of Westminster
Bruno Triplet Sahco
Brunschwig & Fils Brunschwig & Fils
Burlington West One Bathrooms
C & C Milano C & C Milano
Calvin Klein Home Kravet
Candice Olson Kravet
Carolina Irving Textiles Tissus d'Hélène
Casalis Topfloor by Esti
Casamance Colony
Cascade Luce Wired Custom Lighting
Cassaro Stark Fabric
Ceccotti Collezioni Ceccotti Collezioni
Ceramica Bardelli Via Arkadia (Tiles)
Ceramica Colli Via Arkadia (Tiles)
Cesar Espresso Design
Cesari Colony
Champalimaud Holland & Sherry
Charles Burger Turnell & Gigon
Charles Lowe & Sons Artisans of Devizes
Charles Paris Lighting Rubelli/Donghia
Charlotte Moss Passport Collection Stark Carpet
Chase Erwin Chase Erwin
Chella Exterior Fabrics Summit Furniture
China Seas Tissus d'Hélène
Christian Fischbacher David Seyfried Ltd
Christophe Delcourt GMR Interiors
Christopher Hyde Lighting Christopher Hyde Lighting
Christopher Peacock Christopher Peacock
Clarence House Turnell & Gigon
Clodagh (rugs) Tufenkian Artisan Carpets
Cole & Son Cole & Son
Colefax and Fowler Colefax and Fowler
Collection Pierre Fox Linton
Colony Colony
Concertex Textiles StudioTex
Cora Via Arkadia (Tiles)
Cortina Leather StudioTex
Cosmopolitan by Dakota Jackson Decca
Countess von Eckermann J. Robert Scott
Création Baumann Création Baumann
Création Metaphores Abbott & Boyd
Crestron Home Automation Crestron EMEA
Crestron Lighting Crestron EMEA
Crestron Shades Crestron EMEA
Crosswater West One Bathrooms
Currey & Co Paolo Moschino for Nicholas Haslam Ltd

Darius Antique Rugs Stark Carpet
Darryl Carter Collection for Milling Road Baker
Davey Lighting Original BTC
David Hicks by Ashley Hicks Stark Carpet
David Seyfried Ltd David Seyfried Ltd
Davidson Davidson
Davidson Fitted Davidson
De Le Cuona De Le Cuona
De Ploeg StudioTex
De Vecchi Milano Miles x Bookshop
Decca Contract Decca
Decca Home Decca
Decca Hospitality Decca
Declercq Passementiers Pierre Frey
Decobel Jason D'Souza
Decors Barbares Tissus d'Hélène
Decortex Turnell & Gigon
Dedar Dedar
Desiree Espresso Design
Destombes Alton-Brooke
Diamond Baratta Collection Stark Carpet
Dibbern Evitavonni
DND SWD
Dominique Kieffer by Rubelli Rubelli/Donghia
Donghia Rubelli/Donghia
Doris Leslie Blau Collection Stark Carpet
Dorjee Collection Stark Carpet
Dornbracht West One Bathrooms
Doug & Gene Meyer (rugs) Holland & Sherry
Dudgeon Colony
Duravit West One Bathrooms
Eco Wallpapers Cole & Son
Edelman Leather Edelman Leather
Edmond Petit Turnell & Gigon
Edward Bulmer Tissus d'Hélène
Edward Fields Tai Ping Carpets
Egizia Evitavonni
Eickholtz Christopher Peacock
Elitis Abbott & Boyd
Elizabeth Dow Altfield
Elizabeth Eakins Tissus d'Hélène
Engblad & Co Cole & Son
English Antique Glass Original BTC
Enrico Cassina SWD



Ensemble London Fox Linton
Equipo DRT StudioTex
Espresso Design Espresso Design
Etamine Zimmer + Rohde
Ethimo Interdesign UK
Etro Brian Yates
Etro Pierre Frey
Euromobil Espresso Design
Evitavonni Evitavonni
Evitavonni Bed Linen Evitavonni
Extex Summit Furniture
Fabula Living Interdesign UK
Fadini Borghi Pierre Frey
Fahrenheit Lizzo
FAP Via Arkadia (Tiles)
Fintan Whelan Black & Key
Flamant wallpapers Arte
Flavor Paper for Arte Arte
Fleurs d'Hélène Tissus d'Hélène
Flexform Flexform
Fondazione Arte della Seta Lisio Turnell & Gigon
Fontana Arte Interdesign UK
Fonhill Stark Fabric
Foresti/Home Collection Alton-Brooke
Fornasetti Cole & Son
Fox Linton Fox Linton
Frag Interdesign UK
Francesco Della Femmina Miles x Bookshop
Francis Sultana Munira Collection Marc de Berny
Francois Gilles George Spencer Designs
Fret Holland & Sherry
Front Rugs Christopher Peacock
Fürstenberg Miles x Bookshop
FR-One Style Library
G.T. Design Gallotti&Radice
Gaggenau Espresso Design
Gainsborough Silk Weaving Company McKinney Gainsborough
Galbraith & Paul Tissus d'Hélène
Galbraith & Paul (rugs) Holland & Sherry
Gallotti&Radice Gallotti&Radice
Gastón y Daniela Abbott & Boyd
Geoffrey Bradfield Collection Stark Carpet
George Spencer Designs George Spencer Designs
Giardini Brian Yates
Gilles Nouailhac Houllès
Giorgetti Giorgetti
Gladee Lighting Gladee Lighting
Glant Altfield
GP & J Baker GP & J Baker
Gretchen Bellinger Alton-Brooke
Grey Watkins Stark Fabric
Gross Alton-Brooke
Hancock & Moore Baker
Hansgrohe West One Bathrooms
Harlequin Style Library
Hartley & Tissier Wool Classics
HBF Furniture StudioTex
HBF Textiles StudioTex
Hby-Hospitality by Provasi Provasi
Hélène de Saint Lager Miles x Bookshop
Hermès Dedar
Hill Brown Turnell & Gigon
Hodsoll McKenzie Zimmer + Rohde
The Holbein Company Nada Designs



Holland & Sherry Holland & Sherry
Holly Hunt Fox Linton
Home Couture Tissus d'Hélène
HookedOnWalls Arte
Houllès Houllès
Hugues Chevalier Marc de Berny
Iksel – Decorative Arts Iksel – Decorative Arts
Imola Via Arkadia (Tiles)
Impronta Via Arkadia (Tiles)
Innovations Evitavonni
Inversion Decca
Iris Ceramica Via Arkadia (Tiles)
J. Robert Scott J. Robert Scott
J.D. Staron Tim Page Carpets
Jacaranda Carpets Jacaranda Carpets
Jacques Garcia Collection Baker
Jagtar GP & J Baker
James Hare Marvic Textiles
James Malone Fabrics Altfield
James Tufenkian Tufenkian Artisan Carpets
Jane Churchill Colefax and Fowler
Jason D'Souza Jason D'Souza
Jean Louis Deniot Collection Baker
Jean Louis Deniot Sparkx Collection Marc de Berny
Jean Monro Jean Monro
Jean Paul Gaultier Lelièvre Paris
Jed Johnson Home Tissus d'Hélène
Jensen Beds Jensen Beds
Jerry Pair Leather Chase Erwin
Jim Thompson Jim Thompson
John Boyd Alton-Brooke
John Robshaw Tissus d'Hélène
John Saladino (textiles) Miles x Bookshop
John Stefanidis Tissus d'Hélène
Jonathan Adler Fabric Collection Kravet
Joseph Giles SWD
Joshua Ellis Jason D'Souza
Jov Interdesign UK
Julia von Werz Miles x Bookshop
Julian Chichester Julian Chichester
Juliet Travers Colony
Juliette Bigley Black & Key
K P Carpets Alton-Brooke

Kaelo.....	Christopher Peacock
Kallista.....	West One Bathrooms
Kara Mann Collection for Milling Road (furniture).....	Baker
Karcher.....	SWD
Kate Spade.....	Kravet
Katerina Tana.....	George Spencer Designs
Kathryn Ireland.....	Tissus d'Hélène
Katie Ridder.....	Tissus d'Hélène
Kelly Wearstler.....	Lee Jofa
Kendix.....	StudioTex
Kevin Waltz.....	Tufenkian Artisan Carpets
Kirkby Design.....	Romo
Kit Miles.....	Miles x Bookshop
Kndola.....	Christopher Peacock
Knoll Luxe.....	StudioTex
Knoll Studio.....	StudioTex
Knoll Textiles.....	StudioTex
Kohro.....	Altfield
Kote London.....	Black & Key
Kravet.....	Kravet
Kristalia.....	Espresso Design
Kyle Bunting.....	Edelman Leather
Lacaze London.....	Lacaze London
The Lamp Factory London.....	Nada Designs
Lapicida.....	Christopher Peacock
Lapicida.....	Victoria + Albert Baths
Larsen.....	Colefax and Fowler
Laura Kirar Collection (furniture & lighting).....	Baker
Laura Kirar (rugs).....	Tufenkian Artisan Carpets
Le Corbusier wallpapers.....	Arte
Le Crin.....	Abbott & Boyd
Le Gracieux.....	Tissus d'Hélène
Le Manach.....	Pierre Frey
Lee Jofa.....	Lee Jofa
Lefroy Brooks.....	West One Bathrooms
Lelièvre.....	Lelièvre Paris
Leolux.....	Beaufort Collection
Les Olivades.....	Tissus d'Hélène
Les Passementeries de L'Ile de France.....	Turnell & Gigon
Lewis & Wood.....	Lewis & Wood



Light Cube.....	Stark Fabric
Line-kitchen Line.....	Provasi
Link Outdoor.....	Colony
Lisa Fine Textiles.....	Tissus d'Hélène
Littlefair London.....	Lelièvre Paris
Livio de Simone.....	Miles x Bookshop
Lizzo.....	Lizzo
Lizzo Wallcoverings.....	Lizzo
The London Collection.....	Decca
Loro Piana.....	Fox Linton
Louis De Poorter.....	Wool Classics
Louis Poulsen.....	Interdesign UK
Lualdi.....	Poliform
Luce di Carrara.....	Via Arkadia (Tiles)
Luciano Marcato.....	Stark Fabric
Luigi Bevilacqua.....	Alton-Brooke
Lumisol.....	GMR Interiors
Luum Textiles.....	StudioTex
Luxury London Interiors.....	Christopher Peacock
M Marcus.....	SWD
Madder Cutch & Co.....	Tissus d'Hélène
Made for the Trade.....	Tufenkian Artisan Carpets
Madeaux by Richard Smith.....	Tissus d'Hélène
Magic Circus.....	Poliform
Mahout (rugs).....	McKinney Gainsborough
Maison C.....	George Spencer Designs
Maison de Vacances.....	Birgit Israel
Majestic.....	West One Bathrooms
Majilite.....	Dedar
Manital.....	SWD
Manuel Canovas.....	Colefax and Fowler
Marc de Berny.....	Marc de Berny
Marialida.....	Tissus d'Hélène
Mark Alexander.....	Romo
Mark Pollack.....	Tufenkian Artisan Carpets
Martyn Lawrence Bullard.....	Tissus d'Hélène
Marvic Textiles.....	Marvic Textiles
Masureel.....	Brian Yates
Matteo Thun.....	Via Arkadia (Tiles)
Maya Romanoff.....	Altfield
McGuire.....	Baker
McKinney & Co.....	McKinney Gainsborough
McKinnon and Harris.....	McKinnon and Harris
Michael S Smith (furniture).....	Baker
Miele.....	Espresso Design
Milldue.....	Via Arkadia (Tiles)
MIMO Creations.....	Tim Page Carpets
Mirage.....	Via Arkadia (Tiles)
Misia.....	Colony
Missoni.....	Brian Yates
Missoni (carpets).....	Stark Carpet
Mood.....	Flexform
Moore & Giles.....	Altfield
Moquetas Rols.....	Wool Classics
More Provasi.....	Provasi
Morris & Co.....	Style Library
Mulberry Home.....	Mulberry Home
Muriel Brandolini.....	Holland & Sherry
Mutina.....	Via Arkadia (Tiles)
MYB Textiles.....	Tissus d'Hélène
Nada Designs.....	Nada Designs
Nahoor.....	Poliform
The Nanz Company.....	The Nanz Company
Namay Samay.....	Tissus d'Hélène
Nappa Tile.....	StudioTex
Neisha Crosland.....	Turnell & Gigon
Nemo.....	Poliform

The Nicky Haslam Collection.....	Turnell & Gigon
Nicole Fabre Designs.....	Tissus d'Hélène
Nicolette Mayer.....	Stark Fabric
Nigel Coates.....	Via Arkadia (Tiles)
Nina Campbell.....	Nina Campbell
Nina Campbell Collection.....	SA Baxter Foundry & Design Studio
Nina Campbell Collection.....	Stark Carpet
Nina Campbell for Summit Endurance Fabrics.....	Summit Furniture
No.9 Thompson.....	Jim Thompson
Nobilis.....	Nobilis
Northcroft Fabrics.....	Tissus d'Hélène
Novasuede.....	J. Robert Scott
Odaka.....	Altfield
Oficina Inglesa Furniture.....	Oficina Inglesa Furniture
Old Floor.....	Via Arkadia (Tiles)
Old World Weavers.....	Stark Fabric
Omexco.....	Brian Yates
Oomph.....	Nina Campbell
Ora Design.....	Miles x Bookshop
Original BTC.....	Original BTC
Orlando Diaz-Azcuy Collection.....	Baker
Ornamenta.....	Tissus d'Hélène
Oscar de la Renta.....	Lee Jofa
Ozone.....	GMR Interiors
Pagani Collection (lighting).....	Baker
Palecek.....	Paolo Moschino for Nicholas Haslam Ltd
Palestrina London.....	Turnell & Gigon
Pantone.....	Kravet
Paola Lenti.....	Interdesign UK
Paolo Moschino for Nicholas Haslam Ltd.....	Paolo Moschino for Nicholas Haslam Ltd
Paris L'Après Midi.....	George Spencer Designs
Parquets Legno.....	Via Arkadia (Tiles)
Pavoni.....	George Spencer Designs
Pedroso & Osorio.....	Colony
Penta.....	Interdesign UK
Pepe Peñalver (fabrics).....	Lizzo
Perennials (luxury performance fabrics and rugs)....	Sutherland Perennials Studio
Perrin & Rowe.....	Perrin & Rowe
Peter Dunham.....	Tissus d'Hélène
Peter Fasano.....	Tissus d'Hélène
Petracer's.....	Via Arkadia (Tiles)
Phillip Jeffries.....	Phillip Jeffries
Piero Fornasetti.....	Via Arkadia (Tiles)
Pierre Counot Blandin.....	Fox Linton
Pierre Frey.....	Pierre Frey
Pip.....	Brian Yates
Poliform.....	Poliform
Pollack.....	Altfield
Porada.....	Porada
Porta Romana.....	Porta Romana
Prelle.....	Alton-Brooke
Prints Etc.....	Tissus d'Hélène
Provasi.....	Provasi
Pukka Print.....	Tissus d'Hélène
Quadrille.....	Tissus d'Hélène
Quercus & Co.....	George Spencer Designs
Ramm, Son & Crocker.....	Jean Monro
Randy Ridless Collection.....	Stark Carpet
Raoul Textiles.....	Turnell & Gigon
Rapsel.....	Via Arkadia (Tiles)
Remains Lighting.....	Christopher Peacock

Robert Abbey.....	Paolo Moschino for Nicholas Haslam Ltd
Robert Kuo Collection.....	Baker
Romo.....	Romo
Rose Tarlow Melrose House.....	Tissus d'Hélène
Rosemary Hallgarten Fabrics and Rugs.....	Holland & Sherry
Rottet Home.....	Decca
Rubelli Casa.....	Rubelli/Donghia
Rubelli Venezia.....	Rubelli/Donghia
Rug Star.....	Stark Carpet
S Harris.....	Alton-Brooke
SA Baxter Architectural Hardware.....	SA Baxter Foundry & Design Studio
Sabina Fay Braxton.....	Alton-Brooke
Sacco Carpet.....	Sacco Carpet
Sahco.....	Sahco
Sahco Fine Rugs.....	Sahco
Sahco Fine Wallcovering.....	Sahco
Sahco Home Collection.....	Sahco
Samuel & Sons.....	Samuel & Sons
Samuel Heath.....	Samuel Heath
Sandboy Textiles.....	Tissus d'Hélène
Sanderson.....	Style Library
Sandra Jordan.....	Holland & Sherry
Santa Barbara Umbrellas.....	Summit Furniture
Savel Inc.....	Miles x Bookshop
Savoir Beds.....	Savoir Beds
Scalamandré.....	Stark Fabric
Schumacher.....	Turnell & Gigon
Schuyler Samperton Textiles.....	Tissus d'Hélène
Scion.....	Style Library
SDS London.....	Black & Key
Sekers.....	Wemyss
Sequana.....	Tissus d'Hélène
Sette.....	Brian Yates
Shahbaz Afridi.....	Tissus d'Hélène
Sheila Coombes.....	Brian Yates
Sherrill Canet Collection.....	Stark Carpet
Shiir Rugs.....	Tim Page Carpets
Shyam Ahuja.....	Alton-Brooke
Siberian Floors.....	Siberian Floors
Sicis.....	Via Arkadia (Tiles)
Silenia.....	Espresso Design
Silk & Beyond.....	Brian Yates
The Silk Gallery.....	The Silk Gallery
Simpsons.....	Simpsons
Simta.....	The Silk Gallery
Sister Parish.....	Tissus d'Hélène
Sphere8.....	Beaufort Collection
Spherebol.....	Miles x Bookshop
Stark Carpet.....	Stark Carpet
Stark Fabric.....	Stark Fabric
Stark Wallcovering.....	Stark Carpet
Sterlingham.....	West One Bathrooms
Steven Volpe Collection.....	Baker
Stile.....	Via Arkadia (Tiles)
Stroheim.....	Alton-Brooke
Studio Printworks.....	Tissus d'Hélène
Style Library.....	Style Library
Subzero.....	Espresso Design
Subzero.....	Christopher Peacock
Summit Endurance Fabrics.....	Summit Furniture
Summit Furniture.....	Summit Furniture
Summit Umbrellas.....	Summit Furniture

Sunbrella Furnishing Fabrics.....	Summit Furniture
Susan Deliss for Lewis & Wood.....	Lewis & Wood
Susanna Davis.....	Tissus d'Hélène
Sutherland (furniture).....	Sutherland Perennials Studio
SWD.....	SWD
Tai Ping Carpets.....	Tai Ping
Taillardat.....	Pierre Frey
Tamarian Rugs.....	Stark Carpet
Tapet-Café.....	Tissus d'Hélène
Tassinari & Chatel.....	Lelièvre Paris
Teixits Vicens.....	Tissus d'Hélène
Tessitura di Rovezzano.....	Tissus d'Hélène
Texam.....	Brian Yates
Texture Exquisite.....	StudioTex



Textures in Wallcovering.....	J. Robert Scott
Thesign.....	Altfield
THG.....	West One Bathrooms
Thibaut.....	Jacaranda Carpets
Thom Filicia.....	Kravet
Thomas Albrecht.....	Birgit Israel
Thomas Callaway.....	Holland & Sherry
Thomas Pheasant Collection.....	Baker
Threads at GP & J Baker.....	Threads at GP & J Baker
Tim Page Carpets.....	Tim Page Carpets
Tim Page Custom.....	Tim Page Carpets
Tim Page Naturals.....	Tim Page Carpets
Tim Page Rugs.....	Tim Page Carpets
Tisca.....	Topfloor by Esti
Tissage Mahieu.....	Brian Yates
Titley & Marr.....	Tissus d'Hélène
Tobias & The Angel.....	Turnell & Gigon
Tomita Wallcoverings.....	Lizzo
Tony Duquette Collection (lighting).....	Baker
Topfloor Rugs/Wood.....	Topfloor by Esti
Tradition Deconstructed.....	Tufenkian Artisan Carpets
Travers.....	Zimmer + Rohde
Trend.....	Via Arkadia (Tiles)
Triveneta Parchetti.....	Via Arkadia (Tiles)
Tufenkian Artisan Carpets.....	Tufenkian Artisan Carpets

.....	Tufenkian Artisan Carpets
Turnstyle Designs.....	Turnstyle Designs
Tyler Hall.....	Tissus d'Hélène
Tyson London.....	Davidson
Ulf Moritz Fabrics.....	Sahco
Ulf Moritz Tie-backs.....	Sahco
Ulf Moritz Trimmings.....	Sahco
Ulf Moritz Wallcoverings.....	Brian Yates
Ultraleather.....	J. Robert Scott
Ultrasuede.....	Chase Erwin
Untitled collection.....	Tufenkian Artisan Carpets
V&N Textiles.....	StudioTex
Varennna Kitchens.....	Poliform
Varp & Veft.....	StudioTex
Vaughan.....	Vaughan
Veere Grenney.....	Tissus d'Hélène
Veraseta.....	Turnell & Gigon
Verel de Belyal.....	Abbott & Boyd
Versace (tiles).....	Via Arkadia (Tiles)
Vervain.....	Alton-Brooke
Vicente Wolf.....	Tufenkian Artisan Carpets
Violante Lodolo D'oria.....	Miles x Bookshop
Virginia White furniture.....	Miles x Bookshop
Virginia White.....	Tissus d'Hélène
Victoria + Albert Baths.....	Victoria + Albert Baths
Victoria Bain Embroidered Textiles....	J. Robert Scott
Victoria Hagan (rugs).....	Holland & Sherry
Villa Nova.....	Romo
Villeroy & Boch Bathroom & Wellness.....	Villeroy & Boch
Villeroy & Boch Indoor and Outdoors Spas.....	Villeroy & Boch
Villeroy & Boch Indoor and Outdoors Tiles.....	Villeroy & Boch
Villeroy & Boch Kitchen Sinks.....	Villeroy & Boch
Villeroy & Boch Tableware.....	Villeroy & Boch
Viva Ceramica.....	Via Arkadia (Tiles)
Viya Home.....	Dedar
Voghi.....	Turnell & Gigon
Walcot House.....	Beaufort Collection
Wall&Deco.....	West One Bathrooms
WallsOne.....	Altfield
Watts of Westminster.....	Watts of Westminster
Weitzner.....	Altfield
Wemyss.....	Wemyss
Wendy Cushing Passementerie.....	Jason D'Souza
West One Bathrooms.....	West One Bathrooms
Westbury Textiles.....	Altfield
Whistler Leather.....	Whistler Leather
Windsor Smith.....	Kravet
Wired Custom Lighting.....	Wired Custom Lighting
Wolf.....	Christopher Peacock
Wolf.....	Espresso Design
Woodard Weave.....	Stark Carpet
Wool Classics.....	Wool Classics
Woven Wonders.....	Miles x Bookshop
WunderKamer.....	Miles x Bookshop
Ybarra & Serret.....	Brian Yates
Younique.....	Miles x Bookshop
Zak + Fox.....	George Spencer Designs
Zalf.....	Espresso Design
Zardi & Zardi.....	Watts of Westminster
Zimmer + Rohde.....	Zimmer + Rohde
Zinc Textile.....	Romo
Zoffany.....	Style Library

All products shown available at Design Centre, Chelsea Harbour

Wish List

ALL THE SHOWROOMS, CATEGORISED BY THEIR SPECIALISMS – SO YOU CAN GET STRAIGHT TO WHAT YOU NEED, FASTER

ACCESSORIES

Abbott & Boyd
Arteriors
Baker
Baker Lifestyle
Besselink & Jones
Birgit Israel
Black & Key
C & C Milano
Ceccotti
Collezioni
Chase Erwin
Christopher Hyde
Lighting
Christopher Peacock
Colefax and Fowler
Colony
De Le Cuona
Decca
Dedar
Espresso Design
Evitavonni
Gallotti&Radice
Giorgetti
Gladee Lighting
GMR Interiors
GP & J Baker
Holland & Sherry
J. Robert Scott
Jensen Beds
Julian Chichester
Lacaze London
Lelièvre Paris
Lizzo
Marc de Berny
McKinney
Gainsborough
Miles x Bookshop
Mulberry Home
Nada Designs
Nina Campbell
Nobilis
Oficina Inglesa Furniture
Paolo Moschino for
Nicholas Haslam Ltd
Perrin & Rowe
Poliform
Porada
Provasi
Romo
Sahco
Samuel Heath
The Silk Gallery
Simpsons
StudioTex
Style Library
Sutherland Perennials
Studio
Topfloor by Esti

Turnell & Gigon
at Home
Vaughan
West One Bathrooms
Zimmer + Rohde

BATHROOMS

Arteriors
Besselink & Jones
C & C Milano
Christopher Hyde
Lighting
Christopher Peacock
Dedar
Espresso Design
Oficina Inglesa Furniture
Perrin & Rowe
Samuel Heath
SWD
Via Arkadia (Tiles)
Victoria + Albert Baths
Villeroy & Boch
West One Bathrooms

BEDS

Baker
Beaufort Collection
Birgit Israel
Black & Key
Ceccotti Collezioni
Christopher Peacock
Decca
Espresso Design
Flexform
Gallotti&Radice
Giorgetti
GMR Interiors
Interdesign UK
J. Robert Scott
Jensen Beds
Julian Chichester
Lacaze London
Oficina Inglesa Furniture
Paolo Moschino for
Nicholas Haslam Ltd
Poliform
Porada
Provasi
Rubelli/Donghia
Savoir Beds
Simpsons

CARPETS, RUGS & FLOORING

Abbott & Boyd
Alton-Brooke
Artisans of Devizes
Baker
Beaufort Collection
Birgit Israel
C & C Milano
Ceccotti Collezioni
Chase Erwin

Christopher Peacock
Edelman Leather
Flexform
Gallotti&Radice
George Spencer
Designs
Giorgetti
GP & J Baker
Holland & Sherry
Interdesign UK
Jacaranda Carpets
Lelièvre Paris
McKinney
Gainsborough
Nobilis
Paolo Moschino
Nicholas Haslam Ltd
Pierre Frey
Poliform
Porada
Provasi
Romo
Sacco Carpet
Sahco
Siberian Floors
Simpsons
Stark Carpet
Studio
StudioTex
Style Library
Summit Furniture
Sutherland Perennials
Studio
Tai Ping
Tim Page Carpets
Tissus d'Hélène
Topfloor by Esti
Tufenkian
Artisan Carpets
Turnell & Gigon
at Home
Vaughan
Whistler Leather
Wool Classics

CURTAIN POLES & FINIALS

Beaufort Collection
Houlès
McKinney Gainsborough
Nada Designs
Provasi
Watts of Westminster

FABRICS

Abbott & Boyd
Altfield
Alton-Brooke
Baker
Baker Lifestyle
Brian Yates
Brunschwig & Fils
C & C Milano

Chase Erwin
Cole & Son
Colefax and Fowler
Colony
Création Baumann
Creston EMEA
David Seyfried Ltd
De Le Cuona
Dedar
Evitavonni
Fox Linton
GP & J Baker
George Spencer
Designs
Holland & Sherry
Houlès
Iksel – Decorative Arts
J. Robert Scott
Jacaranda Carpets
Poliform
Jason D'Souza
Jean Monro
Jim Thompson
Julian Chichester
Jim Thompson
Kravet
Lee Jofa
Lelièvre Paris
Lewis & Wood
Lizzo
Marvic Textiles
McKinney Gainsborough
Miles x Bookshop
Mulberry Home
Nina Campbell
Nobilis
Paolo Moschino for
Nicholas Haslam Ltd
Pierre Frey
Porada
Porta Romana
Provasi
Romo
Rubelli/Donghia
Sahco
The Silk Gallery
Simpsons
Stark Fabric
StudioTex
Style Library
Summit Furniture
Sutherland Perennials
Studio
Threads at GP & J Baker
Tissus d'Hélène
Turnell & Gigon
Turnell & Gigon
at Home
Vaughan
Watts of Westminster
Wemys
Zimmer + Rohde

FURNITURE

Arteriors
Baker
Baker Lifestyle
Beaufort Collection
Besselink & Jones
Birgit Israel
Black & Key
C & C Milano
Ceccotti Collezioni
Chase Erwin
Christopher Hyde
Lighting
Christopher Peacock
Colony
David Seyfried Ltd
Davidson
Decca
Dedar
Edelman Leather
Espresso Design
Evitavonni
Flexform
Fox Linton
Gallotti&Radice
Giorgetti
Gladee Lighting
GMR Interiors
GP & J Baker
Houlès
Interdesign UK
J. Robert Scott
Jensen Beds
Julian Chichester
Kravet
Lacaze London
Lelièvre Paris
Lizzo
Marc de Berny
McKinney
Gainsborough
McKinnon and Harris
Miles x Bookshop
Mulberry Home
Nina Campbell
Nobilis
Oficina Inglesa Furniture
Paolo Moschino for
Nicholas Haslam Ltd
Pierre Frey
Poliform
Porada
Porta Romana
Provasi
Rubelli/Donghia
Savoir Beds
Simpsons
StudioTex
Style Library
Summit Furniture
Sutherland Perennials
Studio
SWD

Topfloor by Esti
Turnell & Gigon
at Home
Vaughan
Victoria + Albert Baths
Villeroy & Boch
Whistler Leather
Zimmer + Rohde

HARDWARE

Black & Key
Christopher Peacock
Dedar
Espresso Design
Holland & Sherry
Houlès
McKinney Gainsborough
Perrin & Rowe
The Nanz Company
SA Baxter Foundry
& Design Studio
Samuel Heath
SWD
Turnstyle Designs
Victoria + Albert Baths
Watts of Westminster

KITCHENS

Arteriors
Besselink & Jones
Black & Key
Christopher Hyde
Lighting
Christopher Peacock
Espresso Design
Giorgetti
Oficina Inglesa Furniture
Perrin & Rowe
Poliform
Provasi
SA Baxter Foundry
& Design Studio
SWD
Via Arkadia (Tiles)
Villeroy & Boch

LIFESTYLE TECHNOLOGY

Christopher Hyde
Lighting
Création Baumann
Crestron EMEA

LIGHTING

Arteriors
Baker
Beaufort Collection
Bella Figura
Besselink & Jones
Birgit Israel
Black & Key
Ceccotti Collezioni
Christopher Hyde

Lighting
Crestron EMEA
Decca
Dedar
Gallotti&Radice
Giorgetti
Gladee Lighting
GMR Interiors
Interdesign UK
J. Robert Scott
Julian Chichester
Marc de Berny
Miles x Bookshop
Nina Campbell
Original BTC
Paolo Moschino for
Nicholas Haslam Ltd
Poliform
Porada
Porta Romana
Provasi
Rubelli/Donghia
SA Baxter Foundry
& Design Studio
Simpsons
Style Library
Turnell & Gigon
at Home
Vaughan
Wired Custom Lighting

OUTDOOR FURNITURE

Baker
Colony
Giorgetti
Interdesign UK
J. Robert Scott
McKinnon and Harris
StudioTex
Miles x Bookshop
Summit Furniture
Sutherland Perennials
Studio

PAINT

Style Library
Tissus d'Hélène

TILES

Artisans of Devizes
Christopher Peacock
Edelman Leather
Via Arkadia (Tiles)
Victoria + Albert Baths
Villeroy & Boch
West One Bathrooms

TRIMMINGS & LEATHER

Altfield
Alton-Brooke
Baker
Baker Lifestyle
Black & Key
Brunschwig & Fils
C & C Milano
Chase Erwin
Colefax and Fowler
Colony
Dedar
Edelman Leather
Evitavonni
Fox Linton
George Spencer
Designs
Giorgetti
GP & J Baker
Holland & Sherry
Houlès
Jacaranda
Carpets
Jason D'Souza
Jim Thompson
Kravet
Lee Jofa
Lelièvre Paris
Lewis & Wood
Lizzo
McKinney Gainsborough
Mulberry Home
Nada Designs
Nobilis
Pierre Frey
Provasi
Romo
Sahco
Samuel & Sons
The Silk Gallery
Simpsons
StudioTex
Style Library
Threads at
GP & J Baker
Tissus d'Hélène
Topfloor by Esti
Turnell & Gigon

Turnell & Gigon
at Home
Watts of Westminster
Whistler Leather
Zimmer + Rohde

WALLCOVERINGS

Abbott & Boyd
Altfield
Alton-Brooke
Arte
Baker
Baker Lifestyle
Black & Key
Brian Yates
Brunschwig & Fils
C & C Milano
Chase Erwin
Christopher Peacock
Cole & Son
Colefax and Fowler
Colony
David Seyfried Ltd
Dedar
Edelman Leather
Evitavonni
Fox Linton
George Spencer
Designs
GP & J Baker
Holland & Sherry
Houlès
Iksel – Decorative
Arts
J. Robert Scott
Jacaranda Carpets
Jason D'Souza
Jean Monro
Jim Thompson
Kravet
Lee Jofa
Lelièvre Paris
Lewis & Wood
Lizzo
Marvic Textiles
McKinney
Gainsborough
Miles x Bookshop
Mulberry Home
Nina Campbell
Nobilis
Phillip Jeffries
Pierre Frey
Provasi
Romo
Rubelli/ Donghia
Sahco
The Silk Gallery
Stark Fabric
StudioTex
Style Library
Threads at
GP & J Baker
Tissus d'Hélène
Turnell & Gigon
Turnell & Gigon
at Home
Via Arkadia (Tiles)
Watts of Westminster
Wemys
West One Bathrooms
Whistler Leather
Zimmer + Rohde

Kiso
by
YabuPushelberg



TAI PING

a House of Tai Ping brand

Windows to the World

THESE DESIGNER SHOWCASES OFFER A TEMPTING GLIMPSE INTO A COMPANY'S LATEST PRODUCTS

ABBOTT & BOYD
First Floor, North Dome
www.abbottandboyd.co.uk

**ANDREW KORNA T
DESIGNS**
Third Floor, South Dome
www.andrewkornatdesigns.com

ANDREW NEBBETT
Ground Floor and
Second Floor, South Lobby,
Design Centre East
www.andrewnebbettdesigns.co.uk

ANTA SCOTLAND
First Floor, South Dome
www.anta.co.uk/eu

ARTERIORS
Third Floor, South Lobby,
Design Centre East
& Second Floor,
North Lift Lobby
Design Centre
www.arteriorshome.com

BEAUFORT COLLECTION
First Floor, North Lift Lobby
www.beaufortinteriors.co.uk

CASAMANCE
Ground Floor, North Dome
www.casamance.fr

CASA VALENTINA
Second Floor, South Lobby,
Design Centre East
www.casa-valentina.co.uk

CH-OAK DESIGN LTD
Second Floor, Centre Dome
www.ch-oakdesign.co.uk

COLONY FABRICS LTD
Ground Floor, Centre Dome
www.colonyfabrics.com/en

CUE AND CO
First Floor, Centre Dome
www.cueandco.com

DALE ROGERS AMMONITE
First Floor, North Dome
www.dalerogersammonite.com

DECORATIVE EFFECTS
Second Floor, Centre Dome
www.decorativeeffects.co.uk

EVITAVONNI
Second Floor, South Lift Lobby
www.evitavonni.com

FARDIS
First Floor, South Lift Lobby
www.fardis.com

**FOX LINTON
(JIM THOMPSON)**
Second Floor, North Dome
www.foxlinton.com

GLADEE LIGHTING
Ground Floor, Centre Dome
www.gladee.co.uk

HELLOOOW HANDMADE
Second Floor, South Dome
www.hellooow.ca.za

IKSEL – DECORATIVE ARTS
Ground Floor, North Dome
and First Floor, South Lift Lobby
www.iksel.com

JAMES BLY
First Floor, Centre Dome
www.johnbly.com

LEWIS & WOOD
Second Floor, North Lift Lobby,
Design Centre East
www.lewisandwood.co.uk

LOMAX AND WOOD
Third Floor, Centre Dome
www.lomaxwood.co.uk

LYNGARD
First Floor, South Dome
www.lyngard.com

McKINNEY GAINSBOROUGH
Second Floor, South Lift Lobby
www.mckinney.co.uk

MISSONI (T&J VESTOR)
Ground Floor, South Dome
www.missonihome.com/tjvestor

NATUZZI
Second Floor, North Dome
www.natuzzi.co.uk

NINA CAMPBELL
Ground Floor, North Lobby,
Design Centre East
www.ninacampbell.com

O&A LONDON
Third Floor, North Dome
www.oa-london.com

OCHRE
Ground Floor, North Dome
www.ochre.net

**OFICINIA INGLES A
FURNTURE**
First Floor, Centre Dome
www.oficinainglesa.com

OLY STUDIO
First Floor, Centre Dome
www.olystudio.com

ORIGINAL BTC
Second Floor, Centre Dome
www.originalbtc.com

PERRIN & ROWE
Ground Floor, North Dome
www.perrinandrowe.co.uk

REMAINS LIGHTING
Second Floor, Centre Dome
www.remains.com

**ROCKY MOUNTAIN
(OAKPOINT)**
Second Floor, South Dome
www.oakpoint.eu

SA BAXTER
Ground Floor, Centre Dome
www.sabaxter.com

SACCO CARPET
Third Floor, North Lobby,
Design Centre East
www.saccocarpet.com

SDS LONDON
First Floor, North Dome
www.sdslondon.co.uk

SIMPSONS
Ground Floor, South Dome
www.simpsonslondon.com

STARK CARPET
Ground Floor, South Dome
www.starkcarpet.co.uk

STYLE LIBRARY
Ground Floor, Centre Dome
www.stylelibrary.com

SUMMIT FURNITURE
Third Floor, North Dome
www.summitfurniture.com

TAI PING
Ground Floor, Centre Dome
www.houseoftaiping.com

TISSUS D'HELENE
Ground Floor, North Dome
www.tissusdhelene.co.uk

**TUFENKIAN ARTISAN
CARPETS**
First Floor, North Lift lobby
www.tufenkiancarpets.com

VIA ARKADIA (UK)
Third Floor, Centre Dome
via-arkadia.co.uk

New&Now

INSTANT COLOUR CURATED MOODBOARDS
TO GET YOUR COLOUR CRUSH



50 new Sanderson paint colours seamlessly blend enduring heritage with the modern day. See them @style.library.



'Emery' borders @samuelandsons are embroidered with satin stitches. Inspired by the graphic formation found in plant cells, they are contemporary in their articulation and palette.



It only takes a stylish twist to update everything. The 'Jok' side table @poradauk by design duo Gabriele & Oscar Buratti, is remarkable for its glass top in garnet.



Hand blocked patterns by British designer and painter Peggy Angus have been faithfully reproduced by Blithfield. 'Kirby' (shown here) is available in zingy, carnival colourways. Find them @lewisandwood.

Easy does it. This curvaceous 'Parrot' sofa @julianchichester with its long, sinuous silhouette is perfect to soften the hard lines in contemporary interiors.



Made in Switzerland, the 'Focus' basket weave @creationbaumann comes in a spectrum of 50 colours from neutrals and brights to Nordic-inspired hues.

2339

173

2277

5473

296

BRIAN
YATES

www.brian-yates.co.uk



Fanciful fringing anyone? 'Tricolore' braid in tempting gelato colourways can be scooped up @thesilkgallery.

"The happiest times of my life are associated with beautiful, familiar things and family," said grande dame US decorator Sister Parish. Her signature style continues today @tissusdhelenelondon with patterns like this 'Appleton' print in robin's egg blue and paprika.

Shine lightly. The last word in elegance, this hand-blown glass table lamp by Lumisol in rose quartz can be found in Design Centre East @gmr_interiors_london.



872

WGI

196

629

7458



Match the colours, juxtapose the textures: Blush pink and the softest 'Pur Mohair' from Elis make the ultimate pairing @abbottandboyd.

Biden Design's ornate Japanese door handle @davidseyfried captures the beauty of cloisonné. The yellow enamel design is the result of meticulous craftsmanship and painting.



No wonder M C Escher's mathematically inspired woodcuts and lithographs have a global following. New to @brianyatesinteriors is 'Two Birds', now available as a wallcovering.



From the USA, @mckinnonandharris brings romantic allure to its outdoor furniture. A new 'Mughal back' design references ornamental Indian jali screens and the lattice work found in Southern gardens.



Enter the magical world of @arteriorshome with this handsome 'Narnia' lantern which is upscale in both form and style.



Travel informs design. New @vaughandesigns are vibrant lampshades that celebrate far-flung cultures and journeys. Versatile and exotic, the saturated element of this ikat print would spice up any space.



Give your curtains the star treatment by adding a handcrafted finial from @mckinneyandco. The bold, geometric design is enhanced by green hand painted detail. Find it at McKinney Gainsborough.



This minimalist 'Capri' chair by architect and designer Francesco della Femina is inspired by the glamorous Mediterranean island where he lives. Handcrafted by local artisans in black varnished iron, it showcases his respect for raw materials. See more at Miles x Bookshop.



With bold, powerful brushstrokes, the 'Karma' wallcovering @lamaisonpierrefrey makes a stunning panoramic. Printed on embossed vinyl, it echoes the surface of the original canvas.



@nanzhardware's Design Centre East showroom has got bigger and better. Cabinets with an array of tempting hardware, like this (1021) door knob by architect Alan Wanzenberg, beckon with their modern curves and bold facets.



This 'Joie' abstract floral jaquard from Camengo has a whimsical charm. Bright but soft, it brings late blooms into the home. See more @colony showroom.

STAY IN TOUCH

For design inspiration, news and images every day, follow our authoritative social media channels

@designcentrech



For details on forthcoming events visit www.dccch.co.uk, call 020 7225 9166 or email enquiries@dccch.co.uk Design Centre, Chelsea Harbour, Lots Road, London SW10 0XE. All information correct at time of going to press

Getting Around

DESIGN CENTRE EAST		SOUTH DOME		CENTRE DOME		NORTH DOME	
FOURTH FLOOR	The Nanz Company Tai Ping Tissus d'Hélène	DESIGN CLUB PERSONAL SHOPPING Stark Carpet Stark Fabric	SA Baxter Foundry & Design Studio Sutherland Perennials Studio Samuel & Sons SWD Tufenkian Artisan Carpets Via Arkadia (Tiles) Watts of Westminster	Beaufort Collection Gladee Lighting Perrin & Rowe Summit Furniture Via Arkadia (Tiles) Victoria + Albert Baths	THIRD FLOOR		
	Arteriors Artisans of Devizes George Spencer Designs GMR Interiors Jensen Beds Lacaze London Oficina Inglesa Furniture Sacco Carpet Siberian Floors Villeroy & Boch						
THIRD FLOOR	Alton-Brooke Arte CAFE Espresso Design Iksel – Decorative Arts Provavi West One Bathrooms Wool Classics	Crestron EMEA Evitavonni Houlès Jacaranda Carpets McKinney Gainsborough Paolo Moschino for Nicholas Haslam Ltd StudioTex Topfloor by Esti Whistler Leather	Altfield Christopher Hyde Lighting Colony Edelman Leather Gallotti&Radice Original BTC Wired Custom Lighting	De Le Cuona Fox Linton Jim Thompson McKinnon and Harris Phillip Jeffries Sutherland Perennials Studio	SECOND FLOOR		
SECOND FLOOR	Lifts to Design Centre East showrooms	Baker Christopher Peacock Davidson Porada Savoir Beds Style Library Wemyss	Besselink & Jones Ceccotti Collezioni David Seyfried Ltd Giorgetti Holland & Sherry J. Robert Scott Jason D'Souza Lèlievre Paris	Abbott & Boyd Lèlievre Paris Romo Samuel Heath			
FIRST FLOOR	Black & Key C & C Milano Création Baumann Decca Lewis & Wood Nada Designs Pierre Frey Turnstyle Designs	Bella Figura Brian Yates Colefax and Fowler DOME CAFE Flexform Interdesign UK Marvic Textiles Nobilis Poliform Porta Romana Vaughan (just outside)	Chase Erwin Cole & Son INFORMATION DESK Julian Chichester Lizzo Porta Romana Sahco The Silk Gallery Tim Page Carpets	DESIGN CAFE by Absolute Taste Jean Monro Miles x Bookshop Potterton Books Turnell & Gigon at Home Turnell & Gigon Zimmer + Rohde	FIRST FLOOR		
GROUND FLOOR	Baker Lifestyle Birgit Israel Brunschwig & Fils Dedar GP & J Baker Kravet Lee Jofa Marc de Berny Mulberry Home Nina Campbell Rubelli/Donghia Simpsons Threads at GP & J Baker	Covered walkway to Design Centre East	MAIN ENTRANCE Taxi drop-off		GROUND FLOOR		

■ New or relocated showroom

CHRISTOPHER PEACOCK



LUXURIOUS FITTED CABINETRY FOR EVERY ROOM

0207 100 4423

LONDON@PEACOCKHOME.COM

WWW.PEACOCKHOME.COM

